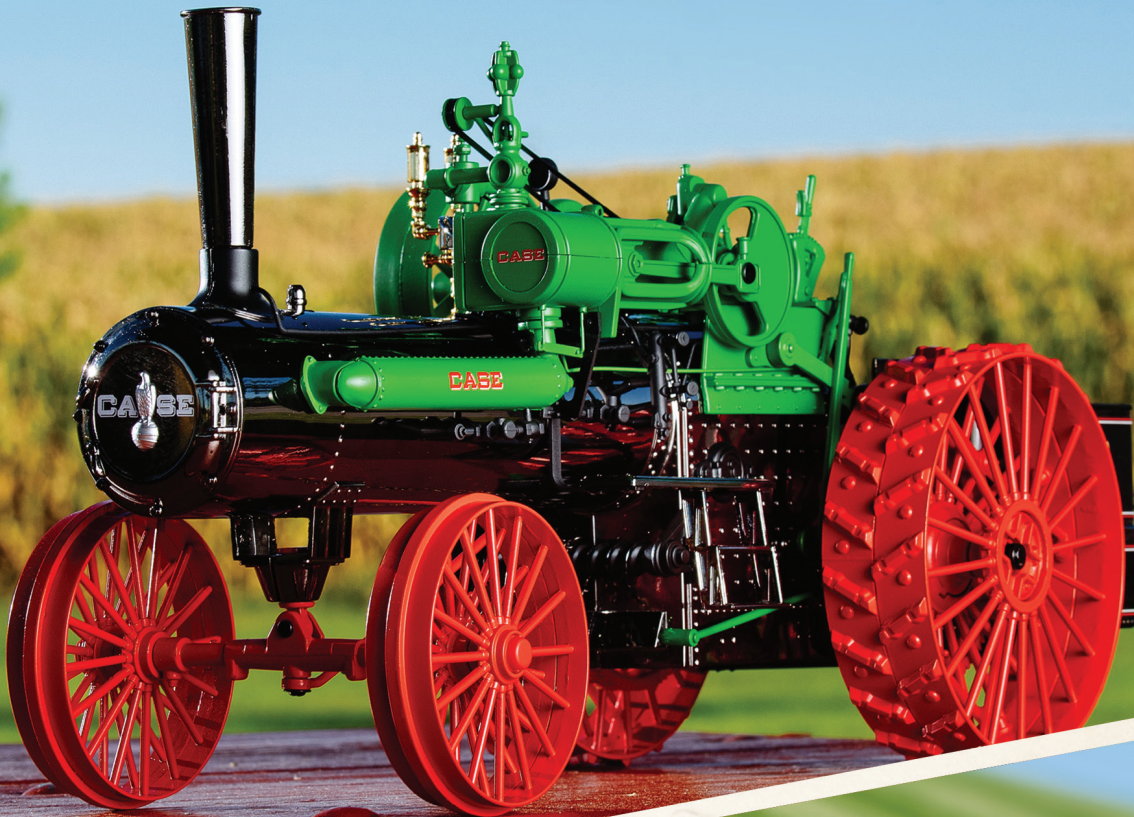


CASE II
AGRICULTURE

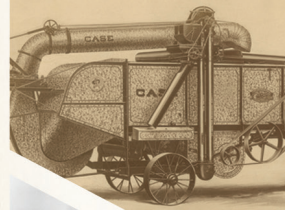
CASE
CONSTRUCTION

2017 Toys and Collectibles

1842-2017 **CASE II** **CASE**
175 YEARS



TOMY
ERTL



ERTL®

CASE II AGRICULTURE

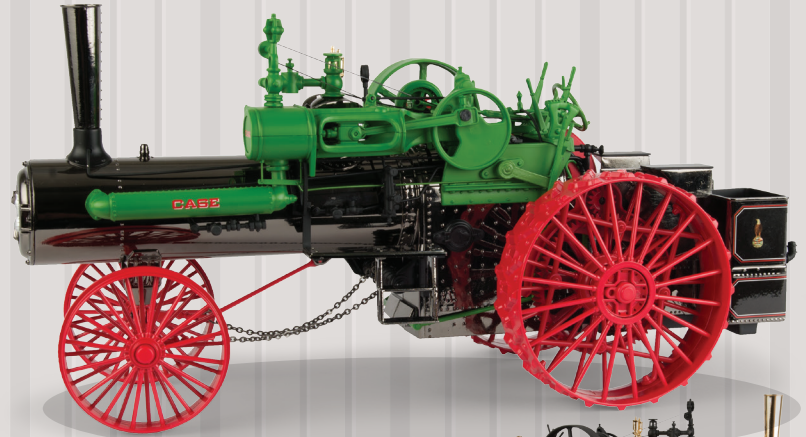
NEW COLLECTOR RELEASES FOR 2017!

-WHILE SUPPLIES LAST -

ZFN44117A 1:16 1256 IH™ TRACTOR WITH ICE CREAM BOX CAB

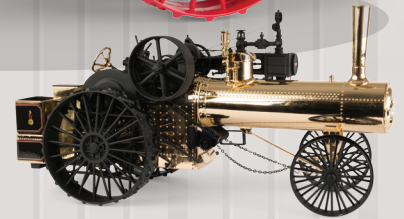
PACK: 4 - AGE GRADE 14+

This replica commemorates the 50th anniversary of the introduction of the International 1256. The tractor has a die-cast body, front axle components, ice cream box cab and front and rear wheels. The 3-point hitch raises and lowers and there is a steel rear hitch and dual rear tires. "IH 1256 50th Anniversary" is engraved in the left body frame. 50 gold chrome-plated chase tractors will be randomly inserted into the production run.



175 YEARS

1842-2017 CASE II CASE



ZFN14900A 1:16 65 HP CASE® STEAM ENGINE

PACK: 2 - AGE GRADE 14+

This 65 HP steam engine has been produced to commemorate Case's 175th Anniversary. The engine features die-cast tank, body, front axle and wheels. Black chrome-plated boiler tanks and rear containment tank. 175 gold chrome-plated chase. Chase steam engines will be randomly inserted into the production run.

60 years STEIGER

2017 is the 60th Anniversary of the original Steiger tractor, built by the Steiger brothers on their farm in Thief River Falls, Minnesota.

From the original "Barney", which was hand built in the barn, to today's Steiger 620, the Steiger name has become synonymous for power, rugged reliability, and innovation. Progressive farmers saw the advantages of a true 4-wheel drive, and those same advantages are just as valid today.

To commemorate the 60th anniversary, ERTL has created a unique blend of Steiger green and CIH graphite gray colors, honoring the "Powerful Heritage" of the Steiger name.

These 1:64, 1:32 and 1:16 scale Steiger 620s have duals and a special Steiger green paint and graphic scheme to commemorate the 60th Anniversary of Steiger tractors. The 1/64 scale has been produced for the 2017 Farm Show and has a Farm Show pad print on the cab roof.



ZFN44093A 1:16 STEIGER® 620 60TH ANNIVERSARY TRACTOR

PACK: 2 - AGE GRADE 14+



**NEW
2017**

ZFN44105A 1:32 STEIGER® 620 60TH ANNIVERSARY TRACTOR

PACK: 3 - AGE GRADE 14+
Est. ship May 2017



ZFN44092A 1:64 STEIGER® 620 60TH ANNIVERSARY TRACTOR

2017 FARM SHOW
PACK: 12 - AGE GRADE 14+



PRECISION ELITE SERIES **4** IN THE SERIES **1026**



ZFN14986
1:16 IH 1026 Hydro
Precision Elite #4
Pack: 4 - Age grade 14+

The tractor will be open station with die-cast fenders, hood, body, front axle, three point hitch, die-cast front and rear wheels. Soft feel seat, soft tires. Push down on the fuel cap and the front fender lights, rear tail light, warning lights and dash gauges will light up. Randomly inserted 'Gold Demonstrator' chase tractor.

PRECISION ELITE SERIES **3** IN THE SERIES **1568**



ZFN14933
1:16 IH 1568 Black Stripe
Precision Elite #3
Pack: 4 - Age grade 14+
- While supplies last

V8 engine with twin exhaust stacks, die-cast body and front axle construction, separate die-cast front weights, die-cast wheels, and rear duals. Push fuel cap down to see grille, fender, and dash lights illuminate. 3-point hitch raises and lowers.



NEW 2017

ZFN44100
1:16 IH 1486 Tri-Stripe
Pack: 4 - Age grade 14+
Available to order on February OWP
Est. ship April 2017

- Prototype shown.
Die-cast body, hood and axle. Separate die-cast weights and rear duals. 3-point hitch.



NEW 2017

ZFN44101
1:16 IH 7488 2+2
Pack: 2 - Age grade 14+
Available to order on May OWP
Est. ship June 2017

Die-cast body and hood. Die-cast wheels with front singles and rear duals. Detailed interior and 3-point hitch.

PRESTIGE™
COLLECTION

1:16 PRESTIGE

ZFN14985

1:16 IH 3688, National Farm Toy Museum
Pack: 4 - Age grade 14+
- While supplies last

Die-cast lower body, row crop axle, dual rear wheels and hood. Also features soft feel tires and detailed interior. The three point hitch raises and lowers.



ZFN14955

1:16 Farmall® "B" with Blue Ribbon Service Logo
Pack: 4 - Age grade 14+

Narrow front, die-cast front and rear wheels, flip up seat.



ZFN44083

1:16 IH 1066
Pack: 4 - Age grade 14+

3-point hitch raises and lowers, front weight bracket with separate front weights.



ZFN14905

1:16 Magnum™ 380 CVT
Pack: 3 - Age grade 14+

- While supplies last
Front and rear duals, opening hood, 3-point hitch, detailed interior, rear fenders, warning arms, mirrors.



PRESTIGE™
COLLECTION



NEW
2017



ZFN44119
1:32 IH 3388 2+2 National Farm Toy Museum
Pack: 3 - Age grade 14+
Available to order on May OWP
Est. ship May 2017
Die-cast front and rear body. Articulated three point hitch raises and lowers. National Farm Toy Museum pad print on cab roof.



ZFN14916
1:32 Magnum™ 380
Pack: 3 - Age grade 14+
- While supplies last
Front and rear dual tires, rear fender warning arms, movable mirrors, detailed interior, rear hitch that raises and lowers.



ZFN14931
1:32 9240 Axial Flow® Combine
Pack: 3 - Age grade 14+
Updated upper body with right side screen vents, new air cleaner tub and duct work, new Tier 4B muffler, new left side operator platform with grab rails, ladder with grab rails, right side platform railing, rear deck railings, interior with updated seat and right side arm rest and controls. 12 row folding corn head with updated gather shields and 40 foot draper head.



ZFN14910
1:32 Steiger® 620 Quadtrac®
Pack: 3 - Age grade 14+
Articulated body, warning arm, movable mirrors, movable 3-point hitch, cab and rear fender lights, cab glass, detailed interior, new right and left front fenders, new exhaust system and new cab suspension.



ZFN14909
1:32 Steiger® 620
Pack: 3 - Age grade 14+
Articulated body, warning arm, movable mirrors, movable 3-point hitch, cab and rear fender lights, detailed interior, new right and left front fenders, new exhaust system and new cab suspension.

1:16 REPLICA TOY

**NEW
2017**

ZFN44102
1:16 Farmall® H
Pack: 4 - Age grade 3+
Available to order on February OWP
Est. ship May 2017
Die-cast body and narrow front axle.



**NEW
2017**

ZFN14987
1:16 1215 Rigid Mounted Planter
Pack: 4 - Age grade 3+
Available to order on February OWP
Est. ship April 2017
Self leveling row units and wheels, folding marker arms, and tool bar hitch.

ZFN12948
1:16 Grain Auger
Pack: 4 - Age grade 3+



ZFN44103
1:16 Farmall® 560 with FFA Logo
Pack: 4 - Age grade 3+
Available to order on May OWP
Est. ship June 2017
Die-cast body, front axle, soft feel tires on plastic wheels. FFA logo on each side of hood. 1:16 hitch allows most 1:16 implements to attach to the tractor.

ZFN44085
1:16 Case 1070 with FFA Logo
Pack: 4 - Age grade 3+
Case Power white paint scheme, CASE AGRI KING hood decals.

ZFN14920
1:16 IH 966 with FFA Logo
Pack: 4 - Age grade 3+
- While supplies last
Flat top fenders, black stripe decoration, FFA logo on side of tractor.



CASE II
AGRICULTURE



ZFN14886
 1:16 Farmall® 656
 Pack: 4 - Age grade 3+
 Die-cast body, wide front axle.



ZFN14893
 1:16 RB565 Premium Round Baler
 Pack: 4 - Age grade 3+
 Opening bale chamber, functioning bale catcher, one round bale included.



ZFN14915
 1:16 Magnum™ 340
 Pack: 3 - Age grade 3+
 - While supplies last
 New Tier 4B exhaust stack and canister, air cleaner stack, left side fuel tank, DEF tank, and left side steps.



ZFN14867
 1:16 Farmall® Super MD
 Pack: 4 - Age grade 3+
 Die-cast body, narrow front axle, and clam shell fenders.

ZFN44084
 1:16 IH Hydro 70 Tractor with Blade
 Pack: 4 - Age grade 3+



1:16 REPLICA TOY - 1:32 REPLICA TOY



ZFN14997

1:16 IH 666 Hydro with Disk
Pack: 4 - Age grade 3+
Tractor has die-cast body, narrow front,
flat top fenders. Disk has die-cast frame.



**NEW
2017**

ZFN44106

1:32 Steiger® 540 4WD
Pack: 3 - Age grade 8+
Available to order on February OWP
Est. ship May 2017

Die-cast body articulated, single soft feel
tires, hitch fits most 1:32 implements.



ZFN14941

1:32 IH 1066 with Duals and Fenders
Pack: 3 - Age grade 3+
1:32 replica of an IH 1066 open station tractor
with IH white hood panels. The tractor has
die-cast body, front axle. Plastic hood, flat top
fenders, soft tires, ROPS canopy and frame.



ZFN44075

1:32 Optum™ 300 CVT
Pack: 3 - Age grade 3+

Die-cast body, front axle and hitch,
removable cab, and detailed interior.



ZFN14942

1:32 IH 1468 with Duals and Cab
Pack: 3 - Age grade 3+

The IH 1468 features IH white hood panels, V8
engine, dual exhaust stacks and IH white deluxe
cab. The tractor has die-cast body, front axle, cab.
Plastic hood, clear windows, exhaust stacks and
soft rear dual tires.

CASE IH
AGRICULTURE



ZFN14999
 1:32 Farmall® 806 with ROPS
 Pack: 3 - Age grade 3+
 Die-cast body, front axle, and ROPS
 frame. Rear hitch attaches to most
 1:32 implements.



ZFN14998
 1:32 Steiger® 580 with Duals
 Pack: 3 - Age grade 8+



ZFN14946
 1:32 IH 4586
 Pack: 3 - Age grade 3+
 Articulated, die-cast front and rear
 body, and toy style drawbar hitch.



ZFN14940
 1:32 Magnum™ 340 Rowtrac™
 Pack: 3 - Age grade 3+
 Die-cast body, hood, and front axle and track
 frame. Soft tracks, and removable cab. Rear hitch
 attaches to most 1:32 implements.



ZFN14943
 1:32 Axial Flow® 8240 Combine
 Pack: 3 - Age grade 3+
 Die-cast body, pivoting unloading auger,
 12 row corn head, grain platform.



ZFN14990
 1:32 True-Tandem 330 Turbo
 Vertical Tillage Machine
 Pack: 3 - Age grade 3+
 Item uses all new tooling and is compatible with
 most 1:32 scale tractors. Features free rolling
 wheels and folding wing frame sections.

1:32 REPLICA TOY - AUTHENTICS - 1:64 REPLICA TOY



ZFN14863
 1:32 8230 Axial Flow® Combine
 Pack: 3 - Age grade 3+
 - While supplies last
 Pivoting unloading auger and front ladder, feeder housing raises and lowers, 12 row corn head, 30' grain head, grain head reel and auger rotate, corn head auger rotates, pivoting rear axle.



ZFN14960
 1:32 Magnum™ 340
 Pack: 3 - Age grade 3+
 - While supplies last
 Removable cab, oscillating front axle, toy hitch.



Authentic #8

ZFN14988
 1:64 Steiger® Quadtrac® Authentic #8
 Pack: 6 - Age grade 14+
 Die-cast front and rear body, die-cast hood, clear windows, detailed interior, soft feel tracks, opening hood, and opening cab door.



Chase Unit

ZFN14961
 1:64 Magnum™ 7250 with Mark 50 Chase Units
Authentic #7
 Pack: 6 - Age grade 14+
 - While supplies last
 Opening hood and left side cab door, MFW, die-cast front wheels and rear duals, 3-point hitch raises and lowers.



NEW 2017

ZFN44125
 1:64 IH 966 with FFA Logo
 Pack: 12 - Age grade 3+
 Available to order on May OWP
 Est. ship June 2017
 Die-cast body, front axle and cab. FFA logo pad printed on top of cab roof.



NEW 2017

ZFN16352
 1:64 Miller Nitro 6500 Self Propelled Sprayer
 Pack: 12 - Age grade 8+
 Available to order on May OWP
 Est. ship May 2017
 1600 gallon tank, 120' fold out boom. Boom raises and lowers. Miller Nitro 6500 markings.



NEW 2017

ZFN44111
 1:64 Farmall® 560
 Pack: 12 - Age grade 3+
 Available to order on May OWP
 Est. ship June 2017
 Die-cast body and front axle, soft feel tires on pastic wheels.





ZFN44116
 1:64 IH 3588 2+2 4WD NFTM
 Pack: 12 - Age grade 3+
 - While supplies last
 Die-cast front and rear body, clear windows, detailed interior, single front tires on an oscillating front axle, and dual rear tires. There is a "NFTM" pad print on the top of the cab roof.



ZFN14978
 1:64 IH 1086
 National Farm Toy Museum
 Pack: 12 - Age grade 3+
 - While supplies last
 Tri-stripe decals on hood and cab, oscillating front axle, dual rear wheels, "NFTM" pad printed on cab roof.



ZFN44082
 1:64 Case IH Semi with Steiger® 500
 Pack: 6 - Age grade 3+
 This 1:64 set includes the Steiger® 500 tractor with singles, semi with Case IH graphics, and all new die-cast lowboy trailer.

ZFN44078
 1:64 Case IH Haying Set
 Pack: 6 - Age grade 8+
 Set includes Puma® 210 CVT, MOCO, hay rake, and RB564 with 3 bales.



ZFN14970
 1:64 Case IH Harvesting Set
 Pack: 6 - Age grade 8+
 Set includes 7240 combine with 12 row corn head and grain head, Magnum™ 340, grain cart, and grain semi.



ZFN44079
 1:64 Farmall® M
 Pack: 12 - Age grade 3+
 Die-cast body and front axle, hitch fits most 1:64 implements.



ZFN14944
 1:64 IH 4586
 Pack: 12 - Age grade 3+
 Articulated die-cast front and rear body.



ZFN14938
 1:64 LB434 Large Square Baler
 Pack: 12 - Age grade 3+
 Tandem axle, pickup head, chute raises and lowers, 4 bales included.

1:64 REPLICA TOY



ZFN44077

1:64 Farmall® 350/450 Set
 Pack: 12 - Age grade 3+
 - While supplies last
 Die-cast body and fenders, narrow front axles, hitches fit most 1:64 implements.



ZFN14945

1:64 9240 Axial Flow® Combine
 Pack: 6 - Age grade 3+
 Updated right rear body panel and cab roof, tier 4B muffler, air cleaner, long unloading auger, 16 row corn head, 40 foot draper head, feeder housing raises and lowers, dual front tires.



ZFN14947P

1:64 Austoft® 8800
 Sugar Cane Harvester
 Pack: 6 - Age grade 14+
 - While supplies last
 Topper boom raises and lowers, elevator assembly pivots.

ZFN14936

1:64 Magnum™ 380 Rowtrac™
 Pack: 12 - Age grade 3+
 New Tier 4B exhaust stack and canister, air cleaner stack and new fuel tanks left and right, with 120" tread rear tracks.



ZFN14962

1:64 IH 5288
 Pack: 12 - Age grade 3+
 Two wheel drive, rear row crop duals, hitch fits most 1:64 implements.



ZFN14980

1:64 WD2504 Windrower
 Pack: 6 - Age grade 3+
 - While supplies last
 Die-cast body, rear axle oscillates, detachable rotary cutter and sickle bar heads.



ZFN14966

1:64 RB565 Premium Round Baler
 Pack: 12 - Age grade 3+
 Opening bale chamber that will eject a bale, comes with 6 bales.

ZFN14855

1:64 Ram Pickup with
 Gooseneck Flatbed Trailer
 with Round Bales
 Pack: 12 - Age grade 3+





ZFN14908
 1:64 Steiger® 620 Quadtrac®
 Pack: 12 - Age grade 3+
 Articulated, detailed interior, rear weights, cab and rear fender lights, new right and left front fenders, and new exhaust system.



ZFN14967
 1:64 Steiger® Turbo Tiger I Series I
 Pack: 12 - Age grade 3+
 Articulated, die-cast body, clear windows, detailed interior.



ZFN14930
 1:64 Magnum™ 7110 with Loader
 Pack: 12 - Age grade 3+
 Loader boom arms raise and lower. Bucket pivots to unload.



ZFN14702
 1:64 Pink Steiger® Panther PTA 310 Series III
 Pack: 12 - Age grade 3+
 Die-cast body and front and rear duals.



ZFN14907
 1:64 Steiger® 580 with Grouser® Blade
 Pack: 12 - Age grade 3+
 Front Grouser® blade, front and rear duals, articulated, detailed interior, rear weights, cab and rear fender lights, new right and left front fenders, and new exhaust system.



ZFN14850
 1:64 330 Turbo Disk
 Pack: 12 - Age grade 3+
 Folding left and right frame wings.



ZFN14964
 1:64 IH 1568 V8
 Pack: 12 - Age grade 3+
 Oscillating front axle.



ZFN14963
 1:64 Magnum™ MX220
 Pack: 12 - Age grade 3+
 Two wheel drive, rear row crop duals, hitch fits most 1:64 implements.



ZFN14876
 1:64 Patriot® 3340 Sprayer
 Pack: 12 - Age grade 8+
 Boom arms fold out to spraying position, boom arms raise and lower.



ZFN14973
 1:64 Pink Magnum™ 340
 Pack: 12 - Age grade 3+
 Oscillating front axle, front and rear duals, rear wheel weights.



ZFN14917
 1:64 Magnum™ 380
 Pack: 12 - Age grade 3+
 Front and rear duals oscillating front axle.



ZFN44081
 1:64 IH 1066
 Pack: 12 - Age grade 3+
 Die-cast body, front axle and cab, detailed interior, oscillating front axle.

CONSTRUCTION TOYS



**NEW
2017**

ZFN44122

1:16 TV380 Compact Track Loader

Pack: 6 - Age grade 8+

Available to order on February OWP

Est. ship February 2017

Updated Case color and graphics schemes.

Grille and side plates, opening front cab door, working bucket raises and lowers, tips to dump.



**NEW
2017**

ZFN44121

1:16 SV340 Skid Steer Loader

Pack: 6 - Age grade 8+

Available to order on February OWP

Est. ship February 2017

Updated Case color and graphics schemes.

Grille and side plates, opening front cab door, working bucket raises and lowers, tips to dump.



ZFN14914

1:50 2050M XLT Crawler Dozer

Pack: 6 - Age grade 3+

Replicated in 1:50 scale, the 2050M XLT Crawler Dozer features rolling PVC tracks, a die-cast body with push beams and a blade that raises and lowers.



ZFN14873

1:50 CX210C Excavator

Pack: 6 - Age grade 3+

Rolling tracks, rotating body, operating boom and bucket assemblies



ZFN14888

1:50 580 Super N WT Loader Backhoe

Pack: 6 - Age grade 3+

Operating front loader, rear backhoe and stabilizer legs.

CASE
CONSTRUCTION



ZFN46617

1:16 Peterbilt Model 367 with Lowboy Trailer - Wide Load

Pack: 2 - Age grade 3+

Available to order on May OWP

Est. ship July 2017

Steerable front wheels, lights and sounds. Lowboy trailer features: removable front hitch, working right and left outriggers.

Dimensions: 45"L x 6.5"W x 7.5"H.

Requires (3) AAA batteries (included).

**NEW
2017**



ZFN35910A

1:16 621F Wheel Loader

Pack: 4 - Age grade 3+

- Prototype shown

Updated with construction graphics, this 1:16 Wheel Loader features lights, sounds, and a working front loader and bucket. Requires (3) AAA batteries (included).



ZFN46640

1:16 SV280 Skid Steer Hobby Farm Set

Pack: 2 - Age grade 3+

Perfect for ages 3 years and older, this hobby farm set features a pink 1:16 SV280 Skid Steer with an interchangeable pallet fork and bucket and lights and sounds. Also included: 8 pieces of fence, 2 horses, and a pallet with 4 hay bales. Requires (3) AAA batteries (included).



ZFN46387

1:16 SV280 Skid Steer

Pack: 4 - Age grade 3+

Lights and sounds, boom arms raise and lower, bucket and fork lift dump and are removable. Requires (3) AAA batteries (included).

**Big
farm**



ZFN46614

1:16 SV280 Skid Steer with

Ram 3500 and Gooseneck Trailer

Pack: 4 - Age grade 3+

This 1:16 Big Farm SV280 Skid Steer and Ram 3500 both feature lights and sounds. The Skid Steer has an interchangeable pallet fork or bucket and includes a pallet of cement blocks for added play value.

The gooseneck trailer features moveable ramps and adjustable jack stands. Requires (6) AAA batteries (included).

Big farm



ZFN46491

1:16 8240 Combine with Grain Head
Pack: 2 - Age grade 3+

Working unloading auger, removable dual front wheels rear ladder slides out and drops down when middle rear body panel is open, movable mirrors, feeder housing will raise and lower, left side front ladder rotates, lights and sounds, steerable rear wheels, adjustable rear hitch, adjustable auger, detachable grain head and reel rotates when combine is pushed forward and backward. Requires (3) "AAA" batteries (included).



ZFN46406

1:16 Peterbilt Model 367 with Grain Trailer
Pack: 2 - Age grade 3+

45"L x 6.5"W x 7.5"H. Semi features lights and sounds, opening cab doors, steerable front wheels, adjustable tag wheels and mirrors. Trailer features opening tarp, opening grain hopper doors, movable jack stand, adjustable tag wheels. Requires (3) "AAA" batteries (included).



ZFN46286

1:16 Puma® 180 with J & M Grain Cart
Pack: 2 - Age grade 3+

Tractor features include lights and sounds, removable cab with open back for access, adjustable hitch fits most 1:16 scale, requires 3 "AAA" batteries (included). J & M Grain Cart features include rotating grain spout, working unloading auger, opening grain door, adjustable jack stand.





ZFN46213

1:16 Peterbilt Model 367 with Flatbed and Farmall® 1206 Narrow Front
Pack: 4 - Age grade 3+
Truck and tractor both feature lights and sounds, truck features opening cab doors, sliding and tilting trailer bed, tractor features narrow front axle, adjustable hitch fits most 1:16 scale. Requires (6) "AAA" batteries (included).



ZFN35634

1:16 Puma® 195 with Loader
Pack: 4 - Age grade 3+
Lights and sounds, removable cab with back open for access, removable loader raises and lowers, bucket tips to dump, adjustable hitch fits most 1:16 scale. Requires (3) "AAA" batteries (included).



ZFN46072

1:16 Puma® 180
Pack: 2 - Age grade 3+
Lights and sounds, removable cab with back open for access, adjustable hitch fits most 1:16 scale. Requires (3) "AAA" batteries (included).



ZFN46296

1:16 Farmall® 1206
Pack: 4 - Age grade 3+
Lights and sounds, wide front axle, removable dual rear wheels, adjustable rear hitch fits most 1:16 scale. Requires (3) "AAA" batteries (included).

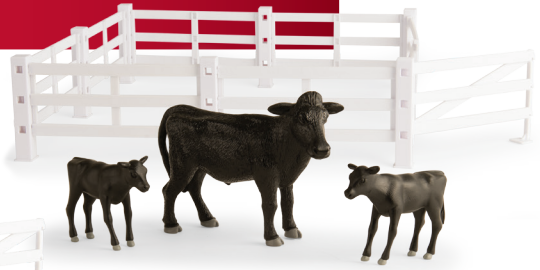


ZFN46409

1:16 Ram 3500 Case IH Service Truck
Pack: 4 - Age grade 3+
Lights and sounds, opening tailgate and doors on service box, separate lube skid, working crane, open cab roof for access to interior, steerable front wheels, rear hitch fits most 1:16 scale. Requires (3) "AAA" batteries (included).



Big farm



ZFN37805

1:16 Big Farm Fence and Animal Set Assortment

Pack: 6 - Age grade 3+

Each set includes 6 pieces of fence, posts, left and right gates. Assortments are: Fencing, horse and two colts; Fencing, pig and two piglets; Fencing, cow and two calves.



ZFN46209

1:16 Peterbilt Model 367 with Dump Box

Pack: 4 - Age grade 3+

Lights and sounds, opening cab doors to access the steering wheel, steerable front wheels, tilting dump box with opening door, hitch fits most 1:16 scale. Requires (3) "AAA" batteries (included).



ZFN46184

1:16 Peterbilt Model 367 with Grain Box

Pack: 4 - Age grade 3+

Lights and sounds, opening cab doors, steerable front wheels, grain box tilts, opening grain door, removable top cover. Requires (3) "AAA" batteries (included).



ZFN13189

1:16 4 Pack of Round Bales

Pack: 4 - Age grade 3+



ZFN12665

1:16 24 Pack of Small Square Bales

Pack: 12 - Age grade 3+



FARM COUNTRY - CORE TOYS



ZFN12924
1:64 Grain Elevator Set
Pack: 4 - Age grade 5+



ZFN12279
1:64 Dairy Barn Set
Pack: 4 - Age grade 5+



ZFN44091
1:64 Vehicle Value Set
Pack: 3 - Age grade 3+
Featuring 20 pieces which includes vehicles, wagons,
and accessory pieces (fencing and animals).
Great play value!

CORE TOYS



**NEW
2017**

ZFN46629

1:32 8230 Combine

Pack: 4 - Age grade 3+

Available to order on February OWP

Est. ship February 2017

The 8230 combine features a working grain head that rotates when combine is pushed. Other features include movable unloading auger and entry steps. Durable plastic construction.



ZFN14388

8" STX 500 with Blade

Pack: 2 - Age grade 5+

Front and rear duals as well as front push blade for hours of sandbox play moving dirt, small rocks and of course, sand.



ZFN46358

1:32 Peterbilt Model 579

with LowBoy Trailer and MX305

Pack: 4 - Age grade 3+

Folding front ramps and trailer

hitch frame is detachable.



**NEW
2017**

ZFN46486

1:32 Peterbilt Model 579 with

Livestock Trailer and Cattle

Pack: 4 - Age grade 3+

Available to order on May OWP

Est. ship May 2017



ZFN46501

1:32 Peterbilt Model 367 with Grain Box and Grain Bin and Grain Auger
Pack: 4 - Age grade 3+

Great harvesting set enhances the imagination, works great with other 1:32 scale farm items.



ZFN46391

1:32 Peterbilt Model 579 with Grain Trailer

Pack: 4 - Age grade 3+
Authentic detail on cab. Trailer features opening tarp and working hoppers.



ZFN46499

1:32 Peterbilt Model 367 with Grain Box

Pack: 4 - Age grade 3+
Tilting grain box, opening grain door, removable tarp.



ZFN14488

8" MX305 with Disc Ripper
Pack: 6 - Age grade 3+

monster treads



ZFN37737
6" Lights and Sounds
Vehicle Assortment
Pack: 4 - Age grade 3+



ZFN46332
Monster Treads Tractor
and Wagon Set
Pack: 4 - Age grade 3+





ZFN46016
8" Steiger® Shake N Sounds
Pack: 4 - Age grade 3+



ZFN46596
5" Monster Treads
4WD Tractor
Pack: 4 - Age grade 3+



ZFN46580
Ram Assortment
Pack: 12 - Age grade 3+



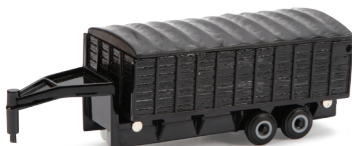
ZFN46576
IH Tractor
Pack: 8 - Age grade 3+



ZFN46573
IH Vintage Tractor
Pack: 12 - Age grade 3+



ZFN46593
Animal Trailer
Pack: 8 - Age grade 3+



ZFN46594
Grain Trailer
Pack: 8 - Age grade 3+



ZFN46502
Case IH Modern Tractor
Pack: 4 - Age grade 3+



ZFN46507
Truck with Case IH Tractor
Pack: 6 - Age grade 3+

COLLECT N PLAY



ZFN46518
1:16 Horse
Pack: 6 - Age grade 3+



ZFN46519
1:16 Cow
Pack: 4 - Age grade 3+



ZFN46520
1:16 Steer
Pack: 6 - Age grade 3+



ZFN46521
1:16 Sow
Pack: 8 - Age grade 3+



ZFN46522
1:16 Colt
Pack: 8 - Age grade 3+



ZFN46523
1:16 Calf
Pack: 10 - Age grade 3+



ZFN46524
1:16 Piglets
Pack: 8 - Age grade 3+



ZFN46525
1:16 Boar
Pack: 8 - Age grade 3+



ZFN46530
1:16 Brittany Spaniel
Pack: 8 - Age grade 3+



ZFN46531
1:16 German Shepherd
Pack: 8 - Age grade 3+



ZFN46532
1:16 Rough Collie
Pack: 8 - Age grade 3+



ZFN46534
1:32 Appaloosa
Pack: 8 - Age grade 3+



ZFN46535
1:32 Angus Bull
Pack: 8 - Age grade 3+



ZFN46536
1:32 Saddle Horse
Pack: 8 - Age grade 3+



ZFN46537
1:32 Thoroughbred
Pack: 8 - Age grade 3+



ZFN46538
1:32 Quarter Horse
Pack: 8 - Age grade 3+



ZFN46533
1:32 Jersey Cow
Pack: 8 - Age grade 3+



ZFN46528
1:32 Holstein Cow
Pack: 8 - Age grade 3+



ZFN46526
1:32 Simmental Cow
Pack: 8 - Age grade 3+



ZFN46527
1:32 Charolais Cow
Pack: 8 - Age grade 3+





tiny tracks

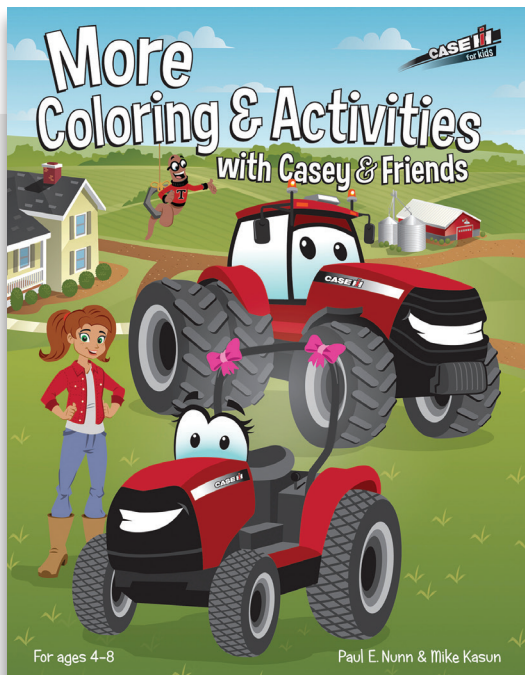
Welcome to the cuddly, sunny, and patterned world of Tiny Tracks. Our Team may be tiny in size, but they're big on personality



ZFN44070
Rory's Shape Sorter
Pack: 6 - Age grade 18 mos+
Tiny Tracks shape sorting bucket includes 7 shapes plus tractor and pig, lid for storage and carry handle for on-the-go fun.



ZFN37798
Tiny Tracks Vehicle Assortment
Pack: 12 - Age grade 18 mos+
4" Tiny Tracks farm vehicles, includes Mini Kell, and Tiny Red.



ZFN44115
More Coloring and Activities with Casey and Friends
Pack: 12 - Age grade 4+
Follow Casey the Farmer and all of her friends as they teach basic problem solving skills through a variety of activities such as matching games, reading, math, story problems and more. Packed with pages of activities, More with Casey and Friends makes learning fun.

RIDING TOYS



ZFN14898
Farmall® 1206 Narrow
Front Pedal Tractor
Pack: 1 - Age grade 3+
Stamp steel construction.



ZFN14992
Magnum™ 380 CVT Pedal Tractor
Pack: 1 - Age grade 3+
Stamp steel construction.



ZFN44066
Stamp Steel Wagon
Pack: 1 - Age grade 2+
Rugged steel construction, new Stable
Steer™ steering for easy maneuverability,
smooth ride pneumatic tires.

ZFN44062
Pedal Tractor and Wagon
Pack: 1 - Age grade 3+
Minimum order quantity: 2
Chain driven pedal tractor. Weight capacity 85 lbs.
Made in the USA using domestic and global components.



CASE IH
AGRICULTURE



ZFN44065
 Magnum™ Pink Battery Operated 12-Volt
 Pack: 1 - Age grade 3+
Minimum order quantity: 2
 2 speeds plus reverse; 2 1/4 and 4 1/2 mph (4 1/2 mph
 lockout for beginners). Adjustable seat with flip-up armrests.
 Ages 3+. Weight capacity 85 lbs. Made in the USA
 using domestic and global components.



ZFN44060
 Magnum™ Battery Operated 12-Volt
 Pack: 1 - Age grade 3+
Minimum order quantity: 2
 2 speeds plus reverse; 2 1/4 and 4 1/2 mph
 (4 1/2 mph lockout for beginners). Adjustable seat with
 flip-up armrests. Weight capacity 85 lbs. Made in the USA
 using domestic and global components.



ZFN44063
 Lil' Tractor and Wagon Battery Operated 6-Volt
 Pack: 1 - Age grade 2+
Minimum order quantity: 2
 Weight capacity 55 lbs. Made in the USA using
 domestic and global components.



ZFN17667
 2017 Catalog
 Pack: 5
 Available to order February OWP



ZFN46179A
 TOMY Bag
 Pack: 125
 Dimensions: 24" x 22" x 6"



ZFN14588
 4WD Key Chain
 (Bulk Pack)
 Pack: 96 - Age grade 14+

Item #	Description	Page Number	Item #	Description	Page Number
ZFN12279	1:64 Dairy Barn Set	19	ZFN44075	1:32 Optum™ 300 CVT	8
ZFN12665	1:16 24 Pack of Small Square Bales	18	ZFN44077	1:64 Farmall® 350/450 Set	12
ZFN12924	1:64 Grain Elevator Set	19	ZFN44078	1:64 Case IH Haying Set	11
ZFN12948	1:16 Grain Auger	6	ZFN44079	1:64 Farmall® M	11
ZFN13189	1:16 4 Pack of Round Bales	18	ZFN44081	1:64 IH 1066	13
ZFN14388	8" STX 500 with Blade	20	ZFN44082	1:64 Case IH Semi with Steiger® 500	11
ZFN14488	8" MX305 with Disc Ripper	21	ZFN44083	1:16 IH 1066	4
ZFN14588	4WD Key Chain (Bulk Pack)	27	ZFN44084	1:16 IH Hydro 70 Tractor with Blade	7
ZFN14702	1:64 Pink Steiger® Panther PTA 310 Series III	13	ZFN44085	1:16 Case 1070 with FFA Logo	6
ZFN14850	1:64 330 Turbo Disk	13	ZFN44091	1:64 Vehicle Value Set	19
ZFN14855	1:64 Ram Pickup with Gooseneck Flatbed Trailer with Round Bales	12	ZFN44092A	1:64 Steiger 620 60th Anniversary Tractor 2017 Farm Show 2	2
ZFN14863	1:32 8230 Axial Flow® Combine	10	ZFN44093A	1:16 Steiger 620 60th Anniversary Tractor	2
ZFN14867	1: 16 Farmall® Super MD	7	ZFN44100	1:16 IH 1486 Tri-Stripe	3
ZFN14873	1:50 CX210C Excavator	14	ZFN44101	1:16 IH 7488 2+2	3
ZFN14876	1:64 Patriot® 3340 Sprayer	13	ZFN44102	1:16 Farmall® H	6
ZFN14886	1:16 Farmall® 656	7	ZFN44103	1:16 Farmall® 560 with FFA Logo	6
ZFN14888	1:50 580 Super N WT Loader Backhoe	14	ZFN44105A	1:32 Steiger 620 60th Anniversary Tractor	2
ZFN14893	1:16 RB565 Premium Round Baler	7	ZFN44106	1:32 Steiger® 540 4WD	8
ZFN14898	Farmall® 1206 Narrow Front Pedal Tractor	26	ZFN44111	1:64 Farmall® 560	10
ZFN14900A	1:16 65 HP Case Steam Engine	2	ZFN44115	More Coloring and Activities with Casey and Friends	25
ZFN14905	1:16 Magnum™ 380 CVT	4	ZFN44116	1:64 IH 3588 2+2 4WD NFTM	11
ZFN14907	1:64 Steiger® 580 with Grouser® Blade	13	ZFN44117A	1:16 1256 IH Tractor with Ice Cream Box Cab	2
ZFN14908	1:64 Steiger® 620 Quadtrac®	13	ZFN44119	1:32 IH 3388 2+2 National Farm Toy Museum	5
ZFN14909	1:32 Steiger® 620	5	ZFN44121	1:16 SV340 Skid Steer Loader	14
ZFN14910	1:32 Steiger® 620 Quadtrac®	5	ZFN44122	1:16 TV380 Compact Track Loader	14
ZFN14914	1:50 2050M XLT Crawler Dozer	14	ZFN44125	1:64 IH 966 with FFA Logo	10
ZFN14915	1:16 Magnum™ 340	7	ZFN46016	8" Steiger® Shake N Sounds	23
ZFN14916	1:32 Magnum™ 380	5	ZFN46072	1:16 Puma® 180	17
ZFN14917	1:64 Magnum™ 380	13	ZFN46179A	TOMY Bag	27
ZFN14920	1:16 IH 966 with FFA Logo	6	ZFN46184	1:16 Peterbilt Model 367 with Grain Box	18
ZFN14930	1:64 Magnum™ 7110 with Loader	13	ZFN46209	1:16 Peterbilt Model 367 with Dump Box	18
ZFN14931	1:32 9240 Axial Flow® Combine	5	ZFN46213	1:16 Peterbilt Model 367 w/ Flatbed & Farmall® 1206 Narrow Front	17
ZFN14933	1:16 IH 1568 Black Stripe Precision Elite #3	3	ZFN46286	1:16 Puma® 180 with J & M Grain Cart	16
ZFN14936	1:64 Magnum™ 380 Rowtrac™	12	ZFN46296	1:16 Farmall® 1206	17
ZFN14938	1:64 LB434 Large Square Baler	11	ZFN46332	Monster Treads Tractor and Wagon Set	22
ZFN14940	1:32 Magnum™ 340 Rowtrac™	9	ZFN46358	1:32 Peterbilt Model 579 with LowBoy Trailer and MX305	20
ZFN14941	1:32 IH 1066 with Duals and Fenders	8	ZFN46387	1:16 SV280 Skid Steer	15
ZFN14942	1:32 IH 1468 with Duals and Cab	8	ZFN46391	1:32 Peterbilt Model 579 with Grain Trailer	21
ZFN14943	1:32 Axial Flow® 8240 Combine	9	ZFN46406	1:16 Peterbilt Model 367 with Grain Trailer	16
ZFN14944	1:64 IH 4586	11	ZFN46409	1:16 Ram 3500 Case IH Service Truck	17
ZFN14945	1:64 9240 Axial Flow® Combine	12	ZFN46486	1:32 Peterbilt Model 579 with Livestock Trailer and Cattle	20
ZFN14946	1:32 IH 4586	9	ZFN46499	1:32 Peterbilt Model 367 with Grain Box	21
ZFN14947P	1:64 Austoft® 8800 Sugar Cane Harvester	12	ZFN46491	1:16 8240 Combine with Grain Head	16
ZFN14955	1:16 Farmall® "B" with Blue Ribbon Service Logo	4	ZFN46501	1:32 Peterbilt Model 367 with Grain Box and Grain Bin and Grain Auger	21
ZFN14960	1:32 Magnum™ 340	10	ZFN46502	Case IH Modern Tractor	23
ZFN14961	1:64 Magnum™ 7250 with Mark 50 Chase Units Authentics #7	10	ZFN46507	Truck with Case IH Tractor	23
ZFN14962	1:64 IH 5288	12	ZFN46518	1:16 Horse	24
ZFN14963	1:64 Magnum™ MX220	13	ZFN46519	1:16 Cow	24
ZFN14964	1:64 IH 1568 V8	13	ZFN46520	1:16 Steer	24
ZFN14966	1:64 RB565 Premium Round Baler	12	ZFN46521	1:16 Sow	24
ZFN14967	1:64 Steiger® Turbo Tiger I Series I	13	ZFN46522	1:16 Colt	24
ZFN14970	1:64 Case IH Harvesting Set	11	ZFN46523	1:16 Calf	24
ZFN14973	1:64 Pink Magnum™ 340	13	ZFN46524	1:16 Piglets	24
ZFN14978	1:64 IH 1086 National Farm Toy Museum	11	ZFN46525	1:16 Boar	24
ZFN14980	1:64 WD2504 Windrower	12	ZFN46526	1:32 Simmettal Cow	24
ZFN14985	1:16 IH 3688, National Farm Toy Museum	4	ZFN46527	1:32 Charolais Cow	24
ZFN14986	1:16 IH 1026 Hydro Precision Elite #4	3	ZFN46528	1:32 Holstein Cow	24
ZFN14987	1:16 1215 Rigid Mounted Planter	6	ZFN46530	1:16 Brittany Spaniel	24
ZFN14988	1:64 Steiger® Quadtrac® Authentics #8	10	ZFN46531	1:16 German Shepherd	24
ZFN14990	1:32 True-Tandem 330 Turbo Vertical Tillage Machine	9	ZFN46532	1:16 Rough Collie	24
ZFN14992	Magnum™ 380 CVT Pedal Tractor	26	ZFN46533	1:32 Jersey Cow	24
ZFN14997	1:16 IH 666 Hydro with Disk	8	ZFN46534	1:32 Appaloosa	24
ZFN14998	1:32 Steiger® 580 with Duals	9	ZFN46535	1:32 Angus Bull	24
ZFN14999	1:32 Farmall® 806 with ROPS	9	ZFN46536	1:32 Saddle Horse	24
ZFN16352	1:64 Miller Nitro 6500 Self Propelled Sprayer	10	ZFN46537	1:32 Thoroughbred	24
ZFN17667	2017 Catalog	27	ZFN46538	1:32 Quarter Horse	24
ZFN35634	1:16 Puma® 195 with Loader	17	ZFN46573	IH Vintage Tractor	23
ZFN35910A	1:16 621F Wheel Loader	15	ZFN46576	IH Tractor	23
ZFN37737	6" Lights and Sounds Vehicle Assortment	22	ZFN46580	Ram Assortment	23
ZFN37798	Tiny Tracks Vehicle Assortment	25	ZFN46593	Animal Trailer	23
ZFN37805	1:16 Big Farm Fence and Animal Set Assortment	18	ZFN46594	Grain Trailer	23
ZFN44060	Magnum™ Battery Operated 12-Volt Pedal Tractor and Wagon	26	ZFN46596	5" Monster Treads 4WD Tractor	23
ZFN44062	Lil' Tractor and Wagon Battery Operated 6-Volt	27	ZFN46614	1:16 SV280 Skid Steer with Ram 3500 and Gooseneck Trailer	15
ZFN44063	Magnum™ Pink Battery Operated 12-Volt Stamp Steel Wagon	26	ZFN46617	1:16 Peterbilt Model 367 with Lowboy Trailer - Wide Load	15
ZFN44066	Rory's Shape Sorter	25	ZFN46629	1:32 8230 Combine	20
ZFN44070			ZFN46640	1:16 SV280 Skid Steer Hobby Farm Set	15



Part No. ZFN17667
 2021 Ninth Street SE, Dyersville, Iowa • U.S.A. 52040-2316
 Phone: 1.563.875.2000 • Fax: 1.563.875.5674 • www.ertl.com

©TOMY

Ertl is a trademark of TOMY International, Inc
 CNH America LLC. CASE IH, IH, McCormick, Farmall, Steiger, Maxxum, Quadtrac, Axial-Flow,
 Patriot, Puma and Grouser are registered trademarks.
 International Harvester, RowTrac, Scout and Magnum are trademarks of CNH AMERICA LLC.
 www.casece.com • www.caseih.com

