

HUSTLER®

RESIDENTIAL, COMMERCIAL & INDUSTRIAL



2013



FIRST, WE CHANGED EVERYTHING

In 1964, Hustler invented the first zero-turn mower. While the rest of the world has played catch-up, our innovative spirit has kept us at the front of the mower industry for nearly 50 years. Today we design and build the fastest and toughest zero-turn mowers in the commercial mowing industry. From the versatile TrimStar to the powerful Super-Z, when you mow with a Hustler, you're riding a revolution.



1961 Roy Mullet joined the company. His vision and entrepreneurial spirit was a catalyst for the company. Later that same year, he was appointed the president by the Board of Directors.



1963 Excel Industries, Inc. started building cabs for after-market farm equipment. Later, contracts were signed with original equipment manufacturers (O.E.M.s) of farm and construction equipment to provide needed cabs.



1964 Model 36; The world's first zero-turning radius lawn mower.

THE THREE EXCEL PIONEERS On the left, Ray Rilling, hydraulics expert, with company President Roy Mullet and John Regier, who brought the idea of the first up-front, independent drive-wheel-steering Hustler mower to Excel.



1966-67 Model 172; The first in our line of industrial-grade mowers with a 72" deck.



1970-74 Model 272; Introduced in February 1970, the Hustler 272 used the first dual-hydrostatic drive system ever developed for a mower.

Constantly monitoring the market in the late 60's, cab manufacturing showed signs of change. Excel started to take a strong foothold into the turf and grounds market.



1975 Model 272 A

In the 1970s, Hustler switched from red to the signature yellow paint color.



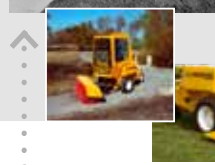
1978 Model 360; Hustler introduced the first self-leveling, hillside mower. Followed by the 402, the 602D, 640/6400 and the ATZ.

1978 Model 275; The 275 firmly established our reputation for durability, dependability and longevity. The 275 permanently raised the bar for what would be expected of a Hustler mower.

Hustler Turf Equipment was born of a simple need - a mower that would maneuver the irregular landscape of the family home - complete with bird baths, gardens, and winding front walkways.

The first Hustler was a compilation of mower parts and farm machinery, created by a genius named John Regier. Mr. Regier's mower cut grass and steered like no other. It could hug a flag pole or reverse directions at a fence line, with a turn radius of zero degrees. With this, the world's first zero-turn mower was born. And it changed everything.

When Mr. Regier brought his design to tractor cab manufacturer Excel Industries, the timing was perfect.

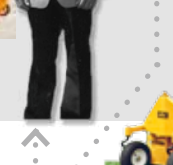


Hustler was the first mowing company with a full range of attachments for increased productivity.

1978 Model 285 showing its multi-seasonal versatility.

1985 Kent Henson named President.

1985 To increase mowing productivity and minimize costs was the rationale behind the Range Wing, the first tractor-mounted wide-area mowing system.



1985 Model 250 - the first rear discharge, mid-mount zero-turn rider. It featured a unique catching system which essentially could not plug.

1991 Paul Mullet, second generation, named President. The company is now into its third generation.

1997 The ShortCut was a stand-up or sit-down zero-turn rider designed to be more compact and more productive.

He couldn't maintain production alone, and Excel was looking to expand its product line. When the folks at Excel saw the mower in action, they knew they had a product that would revolutionize the mowing industry. Under the direction of company president Roy Mullet, Excel began production of Hustler mowers at its plant in Hesston, Kansas.

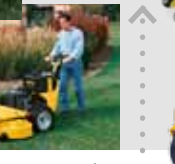
Since then, Hustler has become one of the leading turf care brands in the world. Across the globe, the Hustler brand signifies innovation, quality and superior customer care.

"OUR MISSION IS TO PROVIDE THE MOST DEPENDABLE, USEFUL AND TIME-SAVING PRODUCTS IN TURF CARE."

In addition to manufacturing the best-in-class mowers, Hustler is committed to providing a quality owner experience. Our mission is to provide the most dependable, useful, and time-saving products in turf care, while providing unmatched customer loyalty and the best warranty in the business.

growing Hustler family now includes more than 1,200 U.S. dealers and more than 40 distributors worldwide.

Hustler's experienced dealers are always ready to answer questions and provide expert service to every customer. The

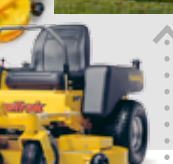


1999 Our first commercial walk-behind mower was the Hydro Walkbehind - it featured an innovative steering system that is much easier to learn and operate than traditional pistol-grip.

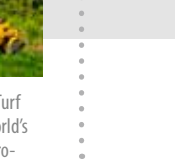
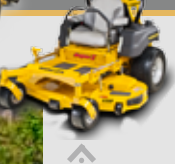
2000 Hustler Z; In May, Hustler began to design a Z-rider to compete in the marketplace. In September of that same year, we debuted the Hustler Z and began the modern era of Hustler Turf Equipment.

2001 With the introduction of the Super Z, Hustler sped to a position of one of the leaders of the mowing industry.

2001 In 2001, Hustler came full circle when we introduced the FasTrak - a residential Z-rider.



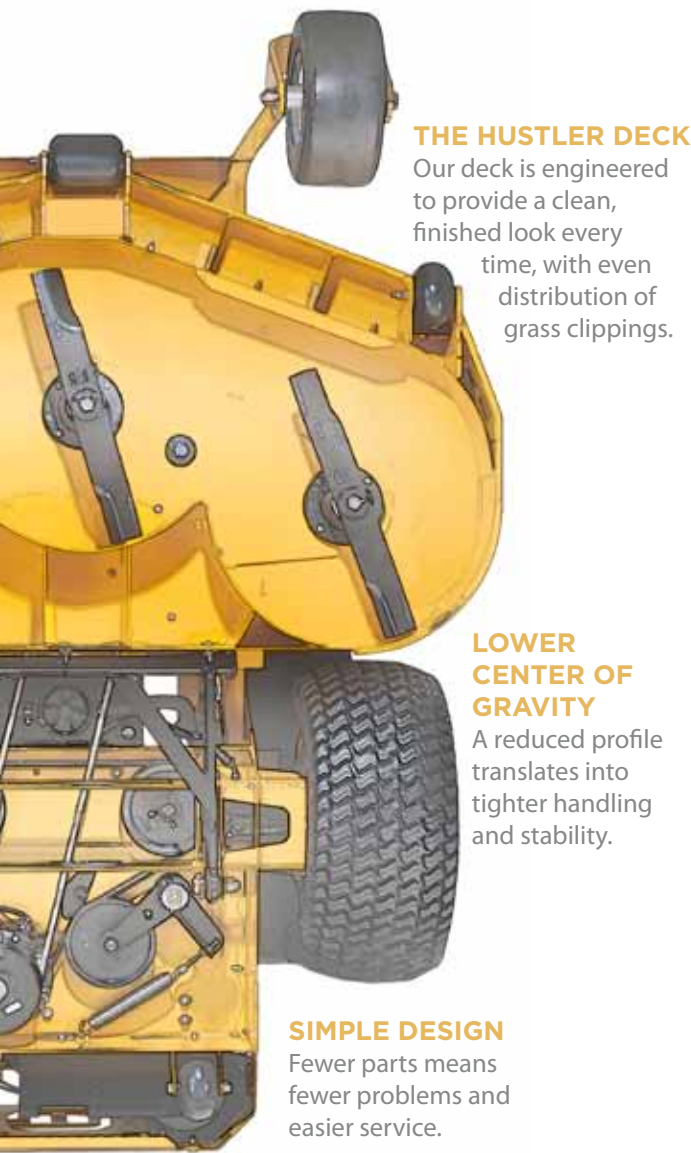
2008 Our first golf course reel mower was the Model 7700 fairway mower. Also introduced at that time, the walk-behind greens mower Model 50.



2010 Hustler Turf introduced the new Super Z utilizing the HyperDrive hydraulic system and VX4 deck technology

TOUGHER. FASTER. SMOOTHER.

WHY HUSTLER IS A BETTER MOWER



THE HUSTLER DECK
Our deck is engineered to provide a clean, finished look every time, with even distribution of grass clippings.

LOWER CENTER OF GRAVITY
A reduced profile translates into tighter handling and stability.

SIMPLE DESIGN
Fewer parts means fewer problems and easier service.



SMOOTHTRAK™ STEERING
It's what makes driving a Hustler a better experience. Our mowers have the smoothest and most precise steering in the industry. You'll glide around obstacles and make zero-radius turns with ease.



PARK BRAKE SYSTEM
Simple, convenient and patented system that automatically engages when you open the steering levers.



EASY SERVICE POINTS We design our mowers with practicality in mind. Exposed access points make servicing a Hustler easier. Oil filter and drain can be tended with a single pan, with no danger of fluids spilling on belts.



STRONGER FRAME The Hustler frame is one solid part, from front fork to rear bumper. There are no bolts holding it together like our competitors' products.

THE OWNERSHIP EXPERIENCE

FOUR BENEFITS OF OWNING AND OPERATING HUSTLER MOWERS

1 WE LISTEN TO OUR CUSTOMERS

What do people want? Why do they want it? And how can we make it happen for them? We listen to the operators out in the field and we address the issues they face every day. Our streamlined production process allows us to make improvements and fix problems – quickly.

2 WE INTEGRATE EXCELLENCE

Our deck team studies, tests and engineers the best designs for cutting grass and dispersing clippings. Our power train team mounts the best engines, transmissions and pumps on our mowers. Then our integration team brings it all together, assuring you that all systems work seamlessly. We're all specialists with a common goal: delivering the best mower in the world to our customers.

3 HUSTLER MOWERS ARE TOUGH. AND THEY PROVE IT

Once we've designed a mower we love, we start abusing it. We rigorously test every model, leaving nothing to chance. Our mowers meet our self-imposed expectations that are higher than industry standards. Hustler owners can rely on their mowers to be the toughest, most dependable in the field.

Our testing includes:

- Shake test
- Engine diagnostics
- Stress tests
- Safety tests
- Mow quality
- Noise testing
- ROPS certification
- Projectile tests
- Field testing

4 THE HUSTLER OWNER EXPERIENCE

When you buy a Hustler, you're buying a deluxe experience. We want our customers to have the best mower and we'll do what it takes to keep them coming back. Hustler sales and service personnel are experts on our machines. Best of all, when you buy a Hustler you always have a go-to dealer network if you ever have a question about your mower. We may be in the mower business, but the most important thing we build is relationships.





R E S I D E N T I A L



THE GAME CHANGER.

Raptor

Ask a team of Hustler engineers to rethink the capabilities of a zero-turn mower and the result is an innovative new machine we call the Raptor. Engineered from the ground up, the Raptor packs more performance, more reliability, more legendary Hustler features into its simple design than any other mower in its class. Who but Hustler would go the extra mile to incorporate the dependability of a welded steel deck, or a heavy-duty fabricated frame into such a competitively priced mower? But there's no mistaking its pedigree. From its front cross beam and caster forks to its SmoothTrak™ steering and patented park brake system, the Raptor is every inch a Hustler.

Raptor

SmoothTrak™ steering with patented automatic park brake system

Lowest seat height!

Kawasaki FR Premium Engines - 3 year warranty

Hand-operated deck lift for easy adjustment of cutting height or transport

Rubberized discharge chute provides exceptional grass clipping distribution

Less parts which equals less headaches. Simple to use, simple to maintain

Fabricated heavy duty steel frame - best in its category!

Heavy-duty fabricated steel deck - more durable

18" drive tires, 11" caster tires, easier on your turf and easier on you



CONFIGURATION QUICK GUIDE

RAPTOR

ENGINE	HP	DECK SIZE	DISCHARGE
KAWASAKI FR651	21.5 HP	42	SIDE
KAWASAKI FR691	23 HP	52	SIDE

Kawasaki Critical Power engines deliver at least 98% of rated horsepower and are SAE Certified. All the power you expect from the engines you trust to get the job done.

ACCESSORIES

- Mulch Kit
- Steering Extension Kit
- Flex Forks™
- Light Kit
- Hour Meter
- 2 Bag Catcher

See your local Hustler dealer for complete warranty information.

LIMITED
WARRANTY
3 YEAR
NO HOUR LIMIT
RESIDENTIAL

WHAT'S IN A NAME

Excel Industries christened its zero-turn mowers "Hustler," a name belonging to the B-58 fighter-bomber. Because of the unique characteristics of the zero-turn mower and its potential impact on the mowing industry, it was important to have a name that carries a message, not unlike the B-58. It's fast. It's powerful. It's a Hustler.





ENJOY
THE RIDE.

Sport

The Hustler Sport is a zero-turning, grass-eating blast. With SmoothTrak™ steering, there is no tree it will not hug, no corner it will not conquer. Designed for homeowners who want a great value, the Sport turns the chore of mowing into an afternoon delight. Yet underneath its peppy spirit lies a rugged workhorse. The Sport's steel frame and welded deck are the toughest in its class. It boasts the power to turn the most challenging yard into a perfectly cut sea of green. And with its incredible durability, you'll spend more time enjoying your lawn and less time taking care of your lawn mower. With a Hustler Sport, mowing has never been such a treat.

SPORT

"I love this Sport. For an average home owner with an acre or less it is THE answer. Small in physical size but big on power and cutting ability. Solid as a rock and the low seat height is a plus. All I can say is NO REGRETS!"

- P. Hammons, South Bend, IN

Less parts which equals less headaches. Simple to use, simple to maintain



SmoothTrak™ steering with patented automatic park brake system

Standard certified ROPS and seat belt

Foot-operated deck lift for easy adjustment of cutting height or transport

Standard rear engine guard provides protection against damage with built-in hitch

Rubberized discharge chute provides exceptional grass clipping distribution

18" drive tires, 11" caster tires, easier on your turf and easier on you

Complete tubular frame provides commercial strength in a residential mower

Heavy duty welded steel deck



CONFIGURATION QUICK GUIDE

SPORT

ENGINE	HP	DECK SIZE	DISCHARGE
KAWASAKI FR541	15 HP	42	SIDE
KAWASAKI FR600	18 HP	48	SIDE
KAWASAKI FR651	21.5 HP	54	SIDE

Kawasaki Critical Power engines deliver at least 98% of rated horsepower and are SAE Certified. All the power you expect from the engines you trust to get the job done.

ACCESSORIES

- Mulch Kit
- 2-Bag Catcher
- Light Kit
- Steering Extension Kit
- Hour Meter
- Containment Kit (48" & 54" only)

See your local Hustler dealer for complete warranty information.

LIMITED WARRANTY
3 YEAR | **NO** HOUR LIMIT
 RESIDENTIAL

GREAT PEOPLE MAKE GREAT MOWERS

It's no coincidence that our particular workforce is responsible for Hustler's success. Hustler employees are not cogs on an assembly line; they're artisans, each practicing his or her specific craft. Our people thrive in Hustler's innovative environment. The proof is in Hustler's incredible track record of employee longevity. The people who put your mower together have an average of 8 years experience with only a four percent turnover rate. Almost a fifth of our workforce has been here 20 years or more. Every day, they work with a passion towards our mission. Through innovation, craftsmanship and hard work, the people at Hustler produce better mowers than anyone.



**COMMERCIAL
MOWING
COMES HOME.**

FasTrak

This isn't your neighbor's mower ... though he'll wish it were. The Hustler FasTrak™ has all the strength, durability and power needed for commercial use. As proof, we offer a remarkable 4-year limited residential warranty plus limited lifetime warranties on the frame and leading edge of the deck. That's a serious mower. But we designed the FasTrak with the homeowner in mind. Even though the frame is forged of heavy-duty steel, the zero-radius SmoothTrak™ steering is easy to use and will edge your flower bed with the finesse of a gardener. Its power makes quick work of the most expansive lawns. Yet it's comfy enough for the most discriminating operator. Once you drive a FasTrak, mowing will never be the same.

FasTrak

"The mower is one of the greatest I've ever owned. My (other brand) is like a toy compared to the FasTrak, so I know it will be my last mower. I can cut my lawn in 50 minutes now. It was taking 3-1/2 hours to cut my lawn with my other mower!"
 - J. McCallum, Macon, GA



SmoothTrak™ steering with patented automatic park brake system

Standard certified ROPS and seat belt

Seat springs, adjustable seat with arm rests come standard

Kawasaki FR Premium Engines - 3 year warranty

Easy to use cutting height adjustment ensures perfect cut height everytime

Premium rubberized discharge chute spreads clippings farther and more evenly for superior after-cut appearance

Heavy duty welded steel decks



CONFIGURATION QUICK GUIDE

FASTRAK

MODEL	HP	DECK SIZE	DISCHARGE
KAWASAKI FS651	22 HP	48	SIDE
KAWASAKI FS691	23 HP	54	SIDE
KAWASAKI FS730	24 HP	60	SIDE

Kawasaki Critical Power engines deliver at least 98% of rated horsepower and are SAE Certified. All the power you expect from the engines you trust to get the job done.

ACCESSORIES

- Mulch Kit
- 2-Bag Catcher
- Flex Forks™
- Light Kit
- Stripe Kit
- Steering Extension Kit

See your local Hustler dealer for complete warranty information.

LIMITED WARRANTY
4 YEAR | **400** HOUR
 RESIDENTIAL

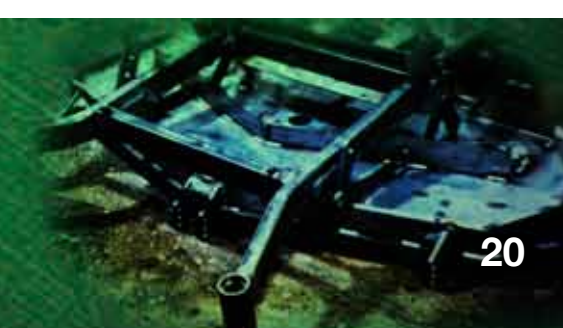
OR

LIMITED WARRANTY
1 YEAR | **400** HOUR
 COMMERCIAL

LIMITED **LIFETIME** WARRANTY
 FRAME & LEADING EDGE OF DECK

WE'RE SERIOUS.

When it comes to building quality grade mowers, we don't mess around. We build our mowers to the highest standards - using the toughest parts and our own industry-leading, proprietary technology. Then we integrate every system to make the smoothest-riding and most dependable mower on the market. If you demand a quality product for a competitive price, look no further, get a Hustler.





**HUSTLER FLEXES
ITS MOWER MUSCLES.**

FasTrak
SUPER DUTY

Are you ready for the most dominant machine on the block? The FasTrak™ Super Duty is a true commercial-grade mower, built for the homeowner who wants more of everything: more horsepower, wide tires, a welded steel deck and neighborhood bragging rights. The Super Duty has it all, and can do it all. SmoothTrak steering makes operating a breeze – from zero-turn in tight spaces to covering straightaways at an industry-setting 8 mph. Most important, the FasTrak Super Duty delivers a professional cut every time.

FaSTrak

SUPER DUTY

"I mow four acres of pasture and my two acre lawn. This ZTR does an outstanding job and has cut my mowing time in half! This mower performed the best without bogging down when it encountered taller grass. I whole heartedly recommend this mower. It is a real joy to operate."
 - R. Reuter, Mulvane, KS



SmoothTrak™ steering with patented automatic park brake system

Standard foldable certified ROPS and seat belt

Seat springs, adjustable seat with arm rests come standard

Kawasaki FX Premium Commercial Duty Engines - 3 year warranty

Premium rubberized discharge chute spreads clippings farther and more evenly for superior after-cut appearance

Easy to use cutting height adjustment ensures perfect cut height everytime

Toughest frame, front forks and deck in the industry

Heavy duty welded steel decks

20" drive tires, 13" caster tires

CONFIGURATION QUICK GUIDE

FASTRAK SUPERDUTY

ENGINE	HP	DECK SIZE	DISCHARGE
KAWASAKI FX600	19 HP	36,42	SIDE
KAWASAKI FX691	22 HP	48	SIDE
KAWASAKI FX730	23.5 HP	54	SIDE
KAWASAKI FX730	23.5 HP	60	SIDE



Kawasaki Critical Power engines deliver at least 98% of rated horsepower and are SAE Certified. All the power you expect from the engines you trust to get the job done.

ACCESSORIES

- Mulch Kit
- 2-Bag Catcher
- Steering Extension Kit
- Flex Forks™
- Light Kit
- Stripe Kit
- Hitch Kit (36"/42")
- Catcher Adapter Kit



See your local Hustler dealer for complete warranty information.

LIMITED WARRANTY
4 YEAR | **800** HOUR
 RESIDENTIAL

OR

LIMITED WARRANTY
2 YEAR | **800** HOUR
 COMMERCIAL

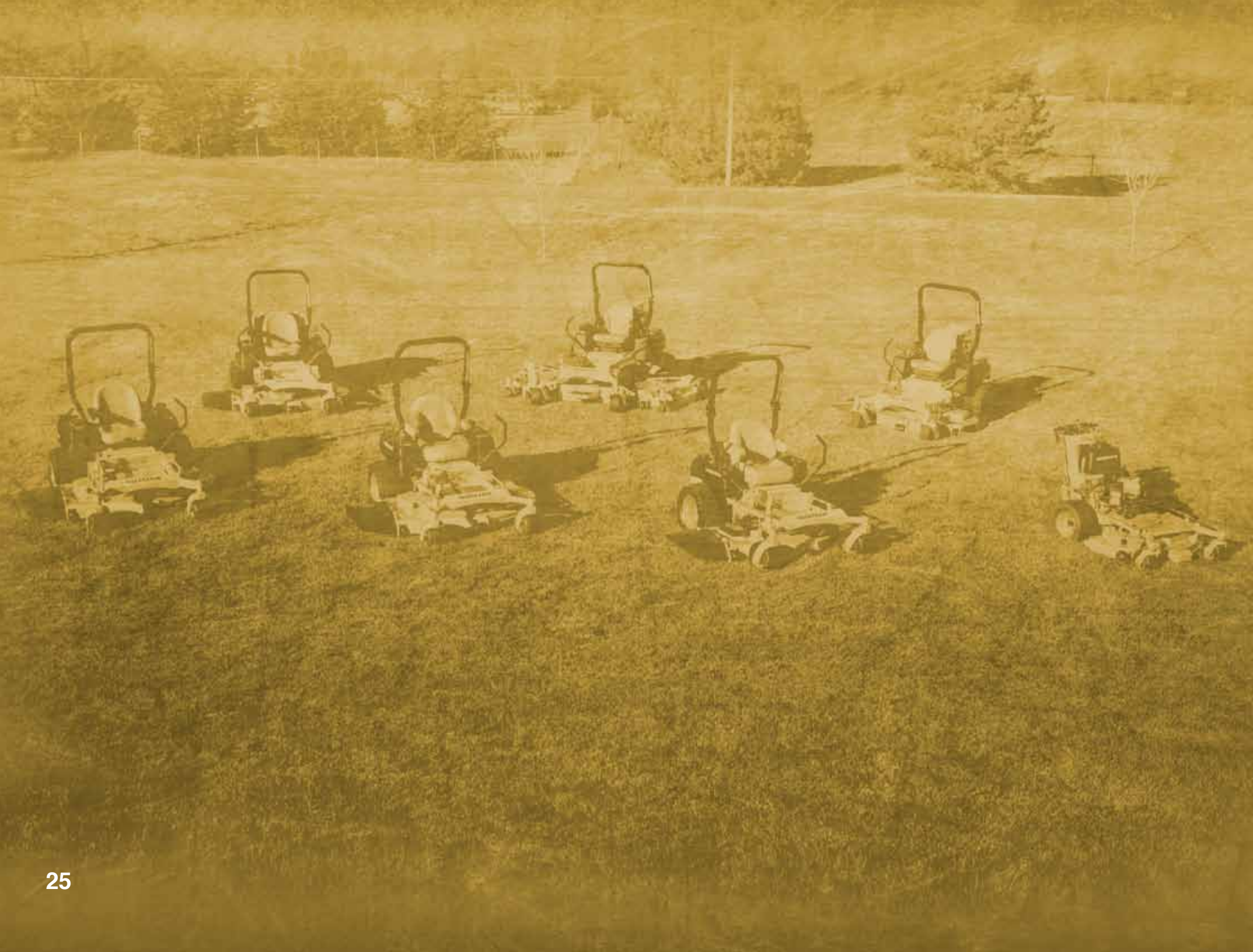
LIMITED
LIFETIME WARRANTY
 FRAME & LEADING EDGE OF DECK

HESSTON
 KANSAS



At Hustler, American workers build the best mowers on Earth. From engineering to assembly to our trademark yellow finish, we do it all from our headquarters in the Heartland. We combine the American innovative spirit with a do-it-right ethic to produce the best zero-turn mower money can buy. That's the way we've done it for nearly 50 years, and we plan to keep it that way.

AMERICAN QUALITY



C O M M E R C I A L

VX4 TECHNOLOGY

HUSTLER DECK TECHNOLOGY IS A CUT ABOVE THE INDUSTRY



Information is based on the 60" deck

THE SUPER Z, DIESEL Z, ATZ & X-ONE BOAST VX4 TECHNOLOGY

- A** .375 thick discharge plate braces the discharge opening from impact
- B** 7 gauge top doublers - (spindle reinforcement) .42 mount thickness
- C** .25 thick ribs provide continuous front-to-back bracing
- D** Increased idler and drive pulley diameters to accommodate higher horsepower engines
- E** 7 gauge outside wrappers (skirt)
- F** 11 gauge bottom doubler ties spindle mounts together to resist spindle impacts
- G** .375" thick anti-scalp wheel mounts

- H** Front wall box section creates a side-to-side (lateral) beam that resists front impacts and keeps deck flat. Anti-scalp wheel pockets are heavily reinforced to protect anti-scalp wheels and deck.
- I** Replaceable rubberized skid-pad
- J** Standard recessed anti-scalp wheels
- K** Adjustable inner-wall baffles
- L** Industrial ductile-iron spindle with 1.5" shaft diameter
- M** Larger discharge opening with high density rubberized discharge chute for greater discharge dispersion
- N** Optional anti-scalp wheels (not shown here)
- O** Large tunnel in front of the blades increases discharge capacity

REAR DISCHARGE DECK

- Limited Lifetime warranty on the leading edge of the decks. See dealer for details.
- 54" and 60" available on X-ONE model and 60" and 72" available on Diesel Z, Super Z & Super Z HyperDrive models.
- Industry exclusive counter rotating blade for the best finish appearance in it's class.
- Dual trim capabilities for increased productivity and greater protection from thrown objects.
- Deck is noticeably quieter in operation.
- Rear discharge requires less horsepower to operate because clippings are not being passed through each blade.
- Same durable construction Hustler is known for.
- Heavy duty ductile iron spindles with sealed bearings for unmatched durability and life.



V1 VERSATILITY - Adjustable front inner wall allows deck performance to be optimized for all grass conditions and seasons.

V2 VELOCITY - The progressively larger tunnel in front of the blades, and a wider discharge opening, moves grass through the deck faster resulting in greater discharge dispersion.

V3 VOLUME - Higher air and grass volume throughput results in less material carried in the cutting chambers. This allows for higher ground speed without compromising cut quality.

V4 VACUUM - The grass is lifted more effectively. This results in a crisp, clean cut and appearance every time.

"I demo'd at least 5 other models before deciding to purchase my Super Z a year ago. The VX4 Deck was and is one of the main features that far exceeds all other models. It doesn't matter if the grass I am cutting is tall, short, wet or dry, the cut is flawless the first time. With my lawn care business, that kind of performance is exactly what I need to grow my bottom line!"

- R. Roche, Baton Rouge, LA



**WITH THE TRIMSTAR
HYDRO, WE
DEFINITELY WALK
THE WALK**

TrimStar

The TrimStar™ is the most innovative walk-behind machine in the professional mowing industry. Our patented H-Bar™ steering is the easiest-to-use walk-behind system in the field, reducing operator fatigue. The TrimStar is a unique machine on it's own, but it can fit nicely in a fleet when operators have hard to reach places that pose problems for conventional riding mowers. When it comes to commercial mowing, we walk the walk.

TrimStar



Easy one hand deck lift makes deck height adjustments a breeze

Cutting heights from 1.5" to 4.5"

Premium rubberized discharge chute spreads clippings farther and more evenly for superior after-cut appearance

11" no flat semi-pneumatic caster tires

Patented H-Bar steering system - Comfortable, user friendly!

3.4-gallon fuel capacity with built-in sight line

Kawasaki Premium Engines - 3 year warranty

18" or 20" drive tires

Heavy duty welded steel decks



CONFIGURATION QUICK GUIDE

TRIMSTAR

ENGINE	HP	DECK SIZE	DISCHARGE
KAWASAKI FS481	14.5 HP	36	SIDE
KAWASAKI FS541	15 HP	48	SIDE
KAWASAKI FS600	18.5 HP	54	SIDE
KAWASAKI FS691 ES*	23 HP	54	SIDE

* Electric Start

Kawasaki Critical Power engines deliver at least 98% of rated horsepower and are SAE Certified. All the power you expect from the engines you trust to get the job done.

ACCESSORIES

- Mulch Kit
- Deck Mounted Catcher
- Pneumatic Tires
- Wavy Mulch Blades
- Gator™ Blades
- Catcher Adapter Kit
- Compatible with after market sulkies and trailers.

See your local Hustler dealer for complete warranty information.

2 YEAR
LIMITED WARRANTY | **NO** HOUR LIMIT

LIMITED **LIFETIME WARRANTY**
LEADING EDGE OF DECK

FOR MORE INFORMATION AND SPECIFICATIONS VISIT

WWW.HUSTLERTURF.COM



COMMERCIAL PERFORMANCE IS JUST THE BEGINNING



Every lawn care professional needs at least one mower he can always count on to “get it done.” The X-ONEi is that mower. While its zero-turn agility lets you turn on a dime, Hustler reliability and ease-of-service ensure that you also turn a profit. The X-ONEi comes equipped with a 52” or 60” commercial-grade deep deck for a bigger bite with every pass. Built on a large, rugged frame and equipped with full-size seat, 24” drive tires, commercial-duty transmissions and your choice of two industry proven Kawasaki FX engines, the X-ONEi can make quick work of even the toughest turf. The lawn mowing entrepreneur knows there’s a world out there just waiting to be mowed. And the X-ONEi is just the machine to do it!



Adjustable twin stick levers for the most comfortable operation available

Easy to use cutting height adjustment ensures perfect cut height everytime

Premium rubberized discharge chute spreads clippings farther and more evenly for superior after-cut appearance

Full Size Commercial Deep Deck

Deluxe vinyl seat with internal suspension and standard armrests

Kawasaki FX Premium Commercial Duty Engines - 3 year warranty

6.8-gallon fuel capacity w/ gauges

24" Drive Tires

CONFIGURATION QUICK GUIDE

X-ONE i

ENGINE	HP	DECK SIZE	DISCHARGE
KAWASAKI FX691	22 HP	52	SIDE
KAWASAKI FX730	23.5 HP	60	SIDE



Kawasaki Critical Power engines deliver at least 98% of rated horsepower and are SAE Certified. All the power you expect from the engines you trust to get the job done.

ACCESSORIES

- Mulch Kit
- Suspension Kit for Seat
- Steering Extension Kit
- Wavy Mulch Blades
- Semi-Pneumatic Tires
- Light Kit
- Flex Forks™
- Gator™ Blades



FOR MORE INFORMATION AND SPECIFICATIONS VISIT

WWW.HUSTLERTURF.COM

See your local Hustler dealer for complete warranty information.

2 YEAR | **1200** HOUR LIMITED WARRANTY **OR** **5** YEAR | **500** HOUR LIMITED WARRANTY

LIMITED **LIFETIME** WARRANTY FRAME & LEADING EDGE OF DECK



PROFESSIONAL PERFORMANCE DAY IN AND DAY OUT



We designed the X-ONE™ mainframe with heavy-gauge tubing for strength. Then we narrowed the body, allowing the X-ONE to carry three different deck sizes to meet any user's needs. With a top speed of 11 mph, the X-ONE makes quick work of the largest jobs. With VX4™ deck technology and SmoothTrak™ Steering, you get an ultra-clean cut and the famous Hustler feel, unparalleled in the zero-turn industry.



VX4
TECHNOLOGY

"This machine has an incredible cut. In our region, we experience heavy morning dew and as a contractor, it was great to have a machine that worked well in all conditions. The VX4 outshined our other units hands down. On rain days, I would give the guys the day off, just so I could take out the Hustler and leave the 'competitor' on the trailer."

- D. Wimble, Moretown, VT



Adjustable twin stick levers for the most comfortable operation available

Easy to use cutting height adjustment ensures perfect cut height everytime

Premium rubberized discharge chute spreads clippings farther and more evenly for superior after-cut appearance

Deluxe vinyl seat with internal suspension and standard armrests

Kawasaki FX Premium Commercial Duty Engines - 3 year warranty

10.3-gallon fuel capacity

Proven separate pumps and motors

Rubber isolated foot-pan reduces noise and vibration

Anti-scalp wheels are recessed for added protection and strength



CONFIGURATION QUICK GUIDE

X-ONE

ENGINE	HP	DECK SIZE	DISCHARGE
KAWASAKI FX691	22 HP	48	SIDE
KAWASAKI FX691	22 HP	54	REAR
KAWASAKI FX730	23.5 HP	54	SIDE
KAWASAKI FX850	27 HP	54	SIDE
KAWASAKI FX730	23.5 HP	60	SIDE/REAR
KAWASAKI FX850	27 HP	60	SIDE
KOHLER EFI	29 HP	60	SIDE

Kawasaki Critical Power engines deliver at least 98% of rated horsepower and are SAE Certified. All the power you expect from the engines you trust to get the job done.

ACCESSORIES

Mulch Kit	Semi-Pneumatic Tires
3-Bag Catcher	Suspension Kit for Seat
BacVac Catcher	Light Kit
Steering Extension Kit	Stripe Kit
Wavy Mulch Blades	Hitch Kit
Gator™ Blades	Sand Kit
Flex Forks™	Rear Anti-Scalp Wheels
Catcher Adapter Kit	

See your local Hustler dealer for complete warranty information.

2 YEAR | **NO** OR **5** YEAR | **500** HOUR
HOUR LIMIT | LIMITED WARRANTY | LIMITED WARRANTY

LIMITED
LIFETIME WARRANTY
FRAME & LEADING EDGE OF DECK

ENJOY THE BENEFITS OF

VX4
TECHNOLOGY

VERSATILITY
VELOCITY
VACUUM
VOLUME





**MOWING THE PATH
THE OTHERS FOLLOW.**

Super Z

Our introduction of the Super Z was a turning point for the industry as well as for Hustler. The marketplace recognized this machine as something unique among performance mowers. Belying its muscular frame was a combination of speed, precision and zero-turn dexterity previously unheard of in this category of mower. Now Hustler has redesigned the Super Z. Sure it's still powered by heavier-duty pumps and motors than any other mower in its class. Sure it's still one of the finest examples of dedicated product development and engineering in the mower industry. Sure it still comes equipped with our VX4 deck technology that optimizes cutting and discharge in every type of grass. And our industry-leading warranty proves we're still as confident of your satisfaction as we are of our mower. But along with everything the marketplace loved about the original, our redesigned Super Z comes with something even more surprising. A lower price. Simply put, the new Hustler Super Z delivers more... for less.

SuperZ

VX4
TECHNOLOGY



Standard foldable certified ROPS and seat belt

Suspension seat for the most comfortable ride

Maintenance free cast iron ductile spindle and housing make this truly "industrial" strength

Internal gussets in the frame make this the envy of the commercial mowing market

1.5" x 3" frame offers exceptional strength and durability

13" pneumatic caster tires

Over-sized front caster bearing for the most durable handling in the industry

Heavy duty rear bumper provides protection for engine and rear of mower

Kawasaki FX Premium Commercial Duty Engines - 3 year warranty

Decks offer doublers and triplers where extra strength is desired

CONFIGURATION QUICK GUIDE

SUPER Z

ENGINE	HP	DECK SIZE	DISCHARGE
KAWASAKI FX850	27 HP	60, 72	SIDE
KAWASAKI FX850	27 HP	60, 72	REAR
KAWASAKI FX1000	35 HP	60, 66, 72	SIDE
KAWASAKI FX1000	35 HP	72	REAR

Kawasaki Critical Power engines deliver at least 98% of rated horsepower and are SAE Certified. All the power you expect from the engines you trust to get the job done.

ACCESSORIES

- Mulch Kit
- 3-Bag Catcher
- BacVac Catcher
- Steering Extension Kit
- Wavy Mulch Blades
- Sand Kit
- Rear Anti-Scalp wheels
- Semi-Pneumatic Tire
- Hydraulic Deck Lift Kit
- Light Kit
- Stripe Kit
- Gator™ Blades
- Flex Forks™
- Catcher Adapter Kit



See your local Hustler dealer for complete warranty information.

2 YEAR LIMITED WARRANTY | **NO** HOUR LIMIT | **OR** **5** YEAR LIMITED WARRANTY | **500** HOUR

LIMITED LIFETIME WARRANTY FRAME & LEADING EDGE OF DECK

REAR DISCHARGE DECK

54" and 60" available on X-ONE model and 60" and 72" available on Diesel Z, Super Z & Super Z HyperDrive models.





I N D U S T R I A L



**DIESEL POWER TO DO ANY JOB.
HUSTLER QUALITY TO DO ANY JOB BETTER.**

Hustler Z DIESEL

The Hustler Z™ Diesel has high-torque power for a wide variety of needs. It's clean, compact design is much more compact than competitive units. The over-center, rubberized discharge chute folds up out of the way. With its engine mounted sideways, this zero-turn mower offers superior serviceability as well as the simplest maintenance in the industry. A wide stance and low center of gravity give this mower unmatched stability and with a top speed of 12 mph, you'll get the job done fast!

Hustler Z DIESEL

VX4 TECHNOLOGY

"I've had a great experience with the Hustler Diesel Z. I cut about 15 acres and the cut is excellent. I tried a competitive model and it was a good machine but the cut quality didn't come close to the Hustler."

- W. Bissonette, Williston, FL



Standard foldable certified ROPS and seat belt

Engine mounted sideways for serviceability and compactness

Suspension seat for the most comfortable ride

Maintenance free cast iron ductile spindle and housing make this truly "industrial" strength

Internal gussets in the frame make this the envy of the commercial mowing market

1.5" x 3" frame offers exceptional strength and durability

Decks offer doublers and triplers where extra strength is desired

Over-sized front caster bearing for the most durable handling in the industry

CONFIGURATION QUICK GUIDE

DIESEL Z			
ENGINE	HP	DECK SIZE	DISCHARGE
SHIBAURA	25 HP	54, 60, 72	SIDE
SHIBAURA	25 HP	60, 72	REAR

Kawasaki Critical Power engines deliver at least 98% of rated horsepower and are SAE Certified. All the power you expect from the engines you trust to get the job done.

ACCESSORIES

- Mulch Kit
- Hydraulic Deck Lift Kit
- Steering Extension Kit
- Wavy Mulch Blades
- Gator™ Blades
- Rear Anti-Scalp wheels
- Beacon Kit
- Sand Kit
- Semi-Pneumatic Tire
- Light Kit
- Stripe Kit
- Hitch Kit
- Flex Forks™
- Hour Meter
- Flasher Kit



ENJOY THE BENEFITS OF

VX4 TECHNOLOGY

VERSATILITY
VELOCITY
VACUUM
VOLUME



See your local Hustler dealer for complete warranty information.

2 YEAR LIMITED WARRANTY | **NO** OR **5** YEAR LIMITED WARRANTY | **500** HOUR

LIMITED LIFETIME WARRANTY FRAME & LEADING EDGE OF DECK



KING OF THE HILL

ATZ

“Don’t try this with your zero-turn mower!” By integrating our patented SmoothTrak™ steering and a potent 35 hp Kawasaki FX engine into its clean, compact design, the Hustler ATZ (“All Terrain Z”) brings zero-turn mowing efficiency to an even higher level. With its extended frame, special 24” bar-tread tires, and a combination of wheel weights and added frame weights, the remarkable Hustler ATZ delivers mowing flexibility that’s tough to match. You get a sure footing and uniform cut every time, even on slopes up to 25 degrees! If slopes are on your job list, nothing compares to the agility, speed and efficiency of the Hustler ATZ. Trees, obstacles, square corners and tight circles are no hill for a climber!



Internal gussets in the frame make this the envy of the commercial mowing market

1.5" x 3" frame offers exceptional strength and durability

Maintenance free cast iron ductile spindle and housing make this truly "industrial" strength

Suspension seat for the most comfortable ride

Standard fixed certified ROPS and seat belt

Extra length for enhanced performance on hills

Bar-tread tires for increased traction

Wheel weights and added frame weight for increased balance and traction

13" Semi-pneumatic front caster tires - No flats!

CONFIGURATION QUICK GUIDE

ATZ			
ENGINE	HP	DECK SIZE	DISCHARGE
Kawasaki FX1000	35 HP	60	SIDE

Kawasaki Critical Power engines deliver at least 98% of rated horsepower and are SAE Certified. All the power you expect from the engines you trust to get the job done.

ACCESSORIES

- Mulch Kit
- Hydraulic Deck Lift Kit
- Steering Extension Kit
- Wavy Mulch Blades
- Rear Anti-Scalp wheels
- Sand Kit
- Pneumatic Tire
- Light Kit
- Stripe Kit
- Gator™ Blades
- Weight Kit



ENJOY THE BENEFITS OF



VERSATILITY
VELOCITY
VACUUM
VOLUME



See your local Hustler dealer for complete warranty information.

2 YEAR LIMITED WARRANTY | **NO** HOUR LIMIT | **OR** **5** YEAR LIMITED WARRANTY | **500** HOUR

LIMITED **LIFETIME WARRANTY**
FRAME & LEADING EDGE OF DECK

HYPERDRIVE™

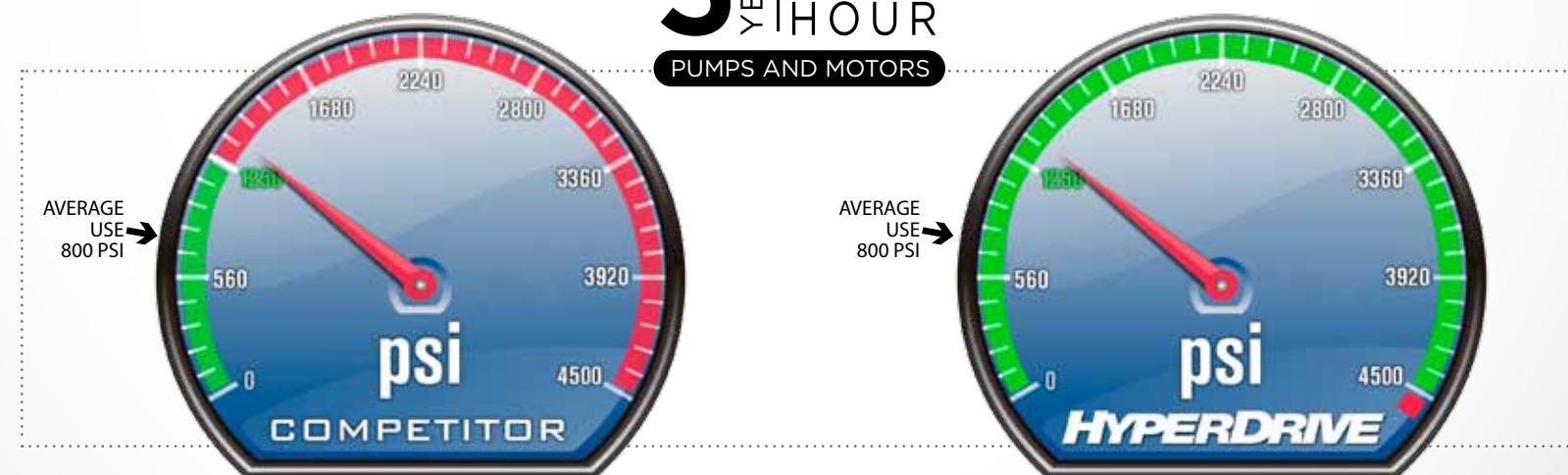
INDUSTRIAL HYDRO SYSTEM

TRY TO PUSH IT TO THE LIMIT. WE DARE YOU.

While regular intense use will break down other mowers' parts, the HyperDrive system is engineered to handle thousands of hours of the toughest jobs without degrading.

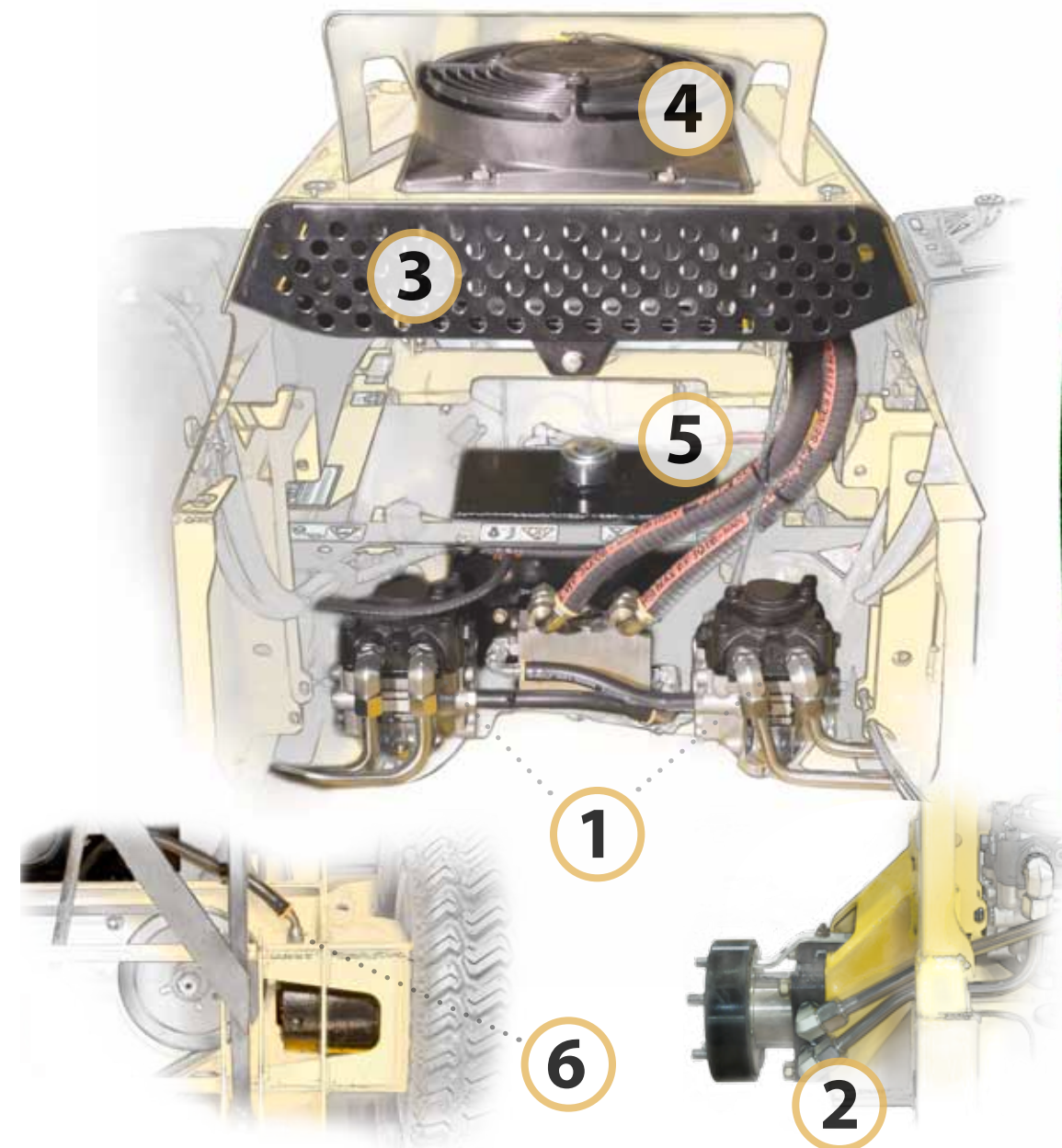
While others are red-lining, the Super Z is comfortably cruising. We've added a bigger reservoir with new slipper-piston pumps to make our Hustler Industrial-Grade mowers the most durable in the industry.

WARRANTY
5 YEAR | **3000** HOUR
 PUMPS AND MOTORS



UNDER AVERAGE USE OF 800 PSI, COMPETITIVE UNITS ARE WORKING 356% HARDER THAN OUR HYPERDRIVE™ HYDRAULIC SYSTEM.

SIX REASONS THAT MAKE THE HYPERDRIVE SYSTEM INDUSTRIAL



1 PUMPS - Sauer Danfoss DDC-20. Two variable displacement, industrial grade slipper piston pumps. Each pump powers one drive-wheel. All stainless-steel, high-pressure lines with Parker SealLok™ O-Ring Face-Seal fittings.

2 WHEEL MOTORS - Parker TG0280 utilizing a patented extra heavy duty torque link with a 60:40 spline geometry. The wheel motor has an added pressurized shuttle that routes hot oil to the cooling system, regulating temperatures for increased life and performance.

3 OIL COOLER - High capacity 3" thick, 10" x 10" aluminum oil cooler with filter screen.

4 FAN - 12 volt, 9" fan with an integrated shroud pulls air through 100% of the oil cooler surface.

5 RESERVOIR - Large 3 US gal. (11.36 L) with easy maintenance threaded filter and drain plug. Increased micron count filter for cleaner running system.

6 HOT OIL SHUTTLE - The wheel motor has an added pressurized shuttle that routes hot oil to the cooling system, regulating temperatures for increased life and performance.



**HARD TO BE HUMBLE
WHEN YOU'RE PERFECT**

SuperZ **HYPERDRIVE**

When we developed our Super Z, we created a machine that was in a class by itself. Now it has a partner. Or more precisely, a big brother. Introducing the Super Z HYPER-DRIVE™. Here is the Hustler Super Z on steroids. Powered by our innovative HYPER-DRIVE hydro system featuring heavier-duty pumps and motors and an oversized reservoir, the Super Z HD operates at an average 18% of capacity compared with competing mowers' 64%. So while commercial-grade mowers are giving their all just to keep up, our Super Z HD isn't even breaking a sweat. Unsurpassed in strength and durability, the Super Z HD is backed by an equally unsurpassed 5 year/3000 hour warranty on pumps and motors. With patented SmoothTrak™ steering, oversized front caster bearings and big 26" rear tires, here is a machine that at 16 mph can literally run circles around other mowers, even while commanding the optional 72" deck. If you're looking for a mower that defines high-performance industrial-grade mowing, it just doesn't get any better than this.

SuperZ HYPERDRIVE

VX4 TECHNOLOGY HYPERDRIVE INDUSTRIAL HYDRO SYSTEM



Standard foldable certified ROPS and seat belt

Suspension seat for the most comfortable ride

Maintenance free cast iron ductile spindle and housing make this truly "industrial" strength

Internal gussets in the frame make this the envy of the commercial mowing market

1.5" x 3" frame offers exceptional strength and durability

Heavy duty rear bumper provides protection for engine and rear of mower

Kawasaki FX Premium Commercial Duty Engines - 3 year warranty

Decks offer doublers and triplers where extra strength is desired

Over-sized front caster bearing for the most durable handling in the industry

16 mph!

CONFIGURATION QUICK GUIDE

SUPER Z HD

ENGINE	HP	DECK SIZE	DISCHARGE
KAWASAKI FX850	27 HP	60, 72	SIDE
KAWASAKI FX850	27 HP	60, 72	REAR
KAWASAKI FX1000	35 HP	60, 72	SIDE
KAWASAKI FX1000	35 HP	72	REAR



Kawasaki Critical Power engines deliver at least 98% of rated horsepower and are SAE Certified. All the power you expect from the engines you trust to get the job done.

ACCESSORIES

- Mulch Kit
- 3-Bag Catcher
- BacVac Catcher
- Steering Extension Kit
- Wavy Mulch Blades
- Sand Kit
- Rear Anti-Scalp wheels
- Semi-Pneumatic Tire
- Hydraulic Deck Lift Kit
- Light Kit
- Stripe Kit
- Gator™ Blades
- Flex Forks™

See your local Hustler dealer for complete warranty information.

3 YEAR LIMITED WARRANTY
NO HOUR LIMIT

OR **5** YEAR LIMITED WARRANTY
500 HOUR

WARRANTY
5 YEAR PUMPS AND MOTORS
3000 HOUR

LIMITED LIFETIME WARRANTY
FRAME & LEADING EDGE OF DECK

5 YEAR/3000 HOUR
PUMPS AND MOTORS

See your local Hustler dealer for complete warranty information.



**HALF A CENTURY OF HUSTLER
ENGINEERING COMES STANDARD.**

Super 104

Face it, you've got a lot of grass to mow. And you're thinking all-wheel drive diesel is the way to go. Think again.

Want to compare performance? You know what the diesel can do. Ours? It can do it faster. That's because the Hustler Super 104 starts with zero-turn agility and a lower profile. That means our machine can zip under trees and around obstacles, through square corners and over uncut turf at up to 11 mph, thanks to an air-cooled 35 hp Kawasaki FX engine. The result is an even, seamless blanket of green, taken in quick, clean sweeps of 104" at a time. You have to admit that's the kind of performance even a diesel believer can appreciate.

Now, want to compare cost? Truth is, there's no comparison.

Super 104

HYPERDRIVE
INDUSTRIAL HYDRO SYSTEM



Hydraulic powered deck and wing lift. Raise and lower the deck from the driver's seat.

Standard foldable certified ROPS and seat belt

Maintenance free cast iron ductile spindle and housing make this truly "industrial" strength

Internal gussets in the frame make this the envy of the commercial mowing market

1.5" x 3" frame offers exceptional strength and durability

15" pneumatic caster tires

Over-sized front caster bearing for the most durable handling in the industry

Heavy duty rear bumper provides protection for engine and rear of mower

Kawasaki FX Premium Commercial Engines - 3 year warranty

Decks offer doublers and triplers where extra strength is desired

CONFIGURATION QUICK GUIDE

SUPER 104

ENGINE	HP	DECK SIZE	DISCHARGE
KAWASAKI FX1000	35 HP	104	REAR
*KOHLER CV980	38 HP	104	REAR

*CA only

Kawasaki Critical Power engines deliver at least 98% of rated horsepower and are SAE Certified. All the power you expect from the engines you trust to get the job done.

ACCESSORIES

- Mulch Kit
- Light Kit
- Wavy Mulch Blades
- Flex Forks™
- Semi-Pneumatic Tire
- Steering Extension Kit
- Gator™ Blades
- Anti-Scalp Kit



See your local Hustler dealer for complete warranty information.

2 YEAR LIMITED WARRANTY | **NO** HOUR LIMIT | **OR** **5** YEAR LIMITED WARRANTY | **500** HOUR

LIMITED LIFETIME WARRANTY ON THE FRAME

EXPERIENCE THE

HYPERDRIVE
INDUSTRIAL HYDRO SYSTEM

Super 104

SuperZ HYPERDRIVE

TRACTION DRIVE SYSTEM	Warranty	OR 2 year, no hour limit - limited 5 year, 500 hour - limited Lifetime, on frame - limited	OR 3 year, no hour limit - limited 5 year, 500 hour - limited 5 year, 3000 hour - pumps and motors Lifetime, frame and leading edge of deck - limited
	Engine Configurations	35hp Kawasaki FX1000 38hp Kohler CV980 (CA only)	27hp Kawasaki FX850 35hp Kawasaki FX1000 38hp Kohler CV980 (CA only)
	Air Filter	Heavy-duty air cleaner to extend the service interval for excessive, dirty applications and improved performance	Heavy-duty air cleaner to extend the service interval for excessive, dirty applications and improved performance
	Park Brake	Patented, integrated into steering levers	Patented, integrated into steering levers
	Drive Tires	26 x 12 – 12, turf tread	26 x 12 – 12, turf tread
	Caster Tires	15 x 6.0 – 6, rib tread, pneumatic	13 x 6.50 – 6, rib tread, pneumatic
	Fuel Capacity	12 US gal (45.4 L)	12 US gal (45.4 L)
	Drive System	Dual hydrostatic. Industry exclusive, industrial duty, slipper piston pumps. Hot oil shuttle for continuous cool oil supply. Transmission drive (oil) cooler w/ fan for increased system life. Sauer Danfoss DDC-20 pumps and Parker TG0360 high torque wheel motors.	Dual hydrostatic. Industry exclusive, industrial duty, slipper piston pumps. Hot oil shuttle for continuous cool oil supply. Transmission drive (oil) cooler w/ fan for increased system life. Sauer Danfoss DDC-20 pumps and Parker TG0280 high torque wheel motors.
Ground Speed	Forward 0-11 mph (0-17.7 kph) Reverse 0-7.5 mph (0-12.07 kph)	Forward 0-16 mph (0-25.7 kph) Reverse 0-7.5 mph (0-12.07 kph)	
MOWING DECKS	Cutting Widths	104" Rear-discharge	60" & 72" Side-discharge / 60" & 72" Rear-discharge
	Discharge Chute	High density, rubberized	High density, rubberized
	Deck System	Hydraulics raise and lower decks. 1/4 in increments from 1 in to 5.5 in (2.55 cm to 13.97 cm)	Foot-operated deck height adjustment. 1/4 in increments from 1 in to 5.5 in (2.55 cm to 13.97 cm)
	Blades	Heavy-duty, heat-treated, low sail steel Fusion™ blades. 23.86 in x 2.50 in x .203 in blade, CW cut 23.86 in x 2.50 in x .203 in blade, CW cut 20.50 in x 2.50 in x .203 in blade, CW cut 20.50 in x 2.50 in x .203 in blade, CW cut	Heavy-duty, heat-treated, high-lift steel Fusion™ blades. 60 in: 20.50 in x 3.00 in x .250 in blade, extra high sail 72 in: 24.50 in x 3.00 in x .250 in blade, extra high sail
	Spindle Housing	Ductile iron casting with steel shafts and sealed ball bearings	Ductile iron casting with steel shafts and sealed ball bearings
	Blade Tip Speed	Rear-Discharge 15,800 fpm	Side-Discharge 60 in: 18,630 fpm 72 in: 18,530 fpm Rear-Discharge 60 in: 18,630 fpm 72 in: 18,040 fpm
	Seat	Grammar suspension seat with isolators.	Michigan suspension seat with armrests. Fore and aft adjustment. OR Optional Grammar suspension seat with isolators.

ATZ

HustlerZ DIESEL

TRACTION DRIVE SYSTEM	Warranty	2 year, no hour limit - limited 5 year, 500 hour - limited Lifetime, frame and leading edge of deck - limited	OR 2 year, no hour limit - limited 5 year, 500 hour - limited Lifetime, frame and leading edge of deck - limited
	Engine Configurations	35hp Kawasaki FX1000	25hp Shibaura, 3 Cyl Diesel
	Air Filter	Heavy-duty air cleaner to extend the service interval for excessive, dirty applications and improved performance	Heavy-duty air cleaner to extend the service interval for excessive, dirty applications and improved performance
	Park Brake	Patented, integrated into steering levers	Patented, integrated into steering levers
	Drive Tires	60 in: 26 x 12 – 12, bar tread	54 in: 24 x 9.5 – 12, turf tread 60" & 72": 24 x 12 – 12, turf tread
	Caster Tires	13 x 6.50 – 6, smooth tread, semi-pneumatic	13 x 6.50 – 6, rib tread, pneumatic
	Fuel Capacity	12 US gal (45.4L)	14.4 US gal (54.5L)
	Drive System	Dual hydrostatic. Industry exclusive, industrial duty, slipper piston pumps. Hot oil shuttle for continuous cool oil supply. Transmission drive (oil) cooler w/ fan for increased system life. Sauer Danfoss DDC-20 pumps and Parker TG0360 high torque wheel motors.	Dual hydrostatic. Hydro-Gear Series PY 21cc pumps and Parker TG0335 high torque wheel motors.
Ground Speed	Forward 0-10 mph (0-16 kph) Reverse 0-6 mph (0-9.7 kph)	Forward 0-12 mph (0-19.3 kph) Reverse 0-7 mph (0-11 kph)	
MOWING DECKS	Cutting Widths	60" Side-discharge	54", 60" & 72" Side-discharge / 60", 72" Rear-discharge
	Discharge Chute	High density, rubberized	High density, rubberized
	Deck System	Foot-operated deck height adjustment. 1/4in increments from 1 in to 5.5 in (2.55 cm to 14 cm)	Foot-operated deck height adjustment. 1/4in increments from 1 in to 5.5 in (2.55 cm to 14 cm)
	Blades	Heavy-duty, heat-treated, high-lift steel Fusion™ blades. 60 in: 20.50 in x 3.00 in x .250 in blade, extra high sail	Heavy-duty, heat-treated, high-lift steel Fusion™ blades. 54 in: 18.50 in x 3.00 in x .203 in blade, extra high sail 60 in: 20.50 in x 3.00 in x .203 in blade, extra high sail 72 in: 24.50 in x 3.00 in x .230 in blade, extra high sail
	Spindle Housing	Ductile iron casting with steel shafts and sealed ball bearings	Ductile iron casting with steel shafts and sealed ball bearings
	Blade Tip Speed	Side-Discharge 60 in: 18,630 fpm	Side-Discharge 54 in: 18,322 fpm 60 in: 18,260 fpm 72 in: 18,890 fpm Rear-Discharge 60 in: 18,200 fpm 72 in: 18,240 fpm
	Seat	Molded vinyl suspension seat with armrests. Fore and aft adjustment.	Molded vinyl suspension seat with armrests. Fore and aft adjustment.



TRACTION DRIVE SYSTEM	Warranty	OR 2 year, no hour limit - limited 5 year, 500 hour - limited Lifetime, frame and leading edge of deck - limited	OR 2 year, no hour limit - limited 5 year, 500 hour - limited Lifetime, frame and leading edge of deck - limited
	Engine Configurations	27hp Kawasaki FX850 35hp Kawasaki FX1000 25.5hp Kawasaki FX801 (CA only)	22hp Kawasaki FX691 27hp Kawasaki FX850 23.5hp Kawasaki FX730 29hp Kohler Command EFI
	Air Filter	Heavy-duty air cleaner to extend the service interval for excessive, dirty applications and improved performance	Heavy-duty air cleaner to extend the service interval for excessive, dirty applications and improved performance
	Park Brake	Patented, integrated into steering levers	Patented, integrated into steering levers
	Drive Tires	24 x 12 - 12, turf tread	48, 54 in: 24x 9.5 - 12, turf tread 60 in: 24 x 12 - 12, turf tread
	Caster Tires	13 x 6.50 - 6, rib tread, pneumatic	13 x 6.5 - 6, rib tread, pneumatic
	Fuel Capacity	12 US gal (45.43 L)	10.3 US gal (38.9 L)
	Drive System	Dual hydrostatic. Hydro-Gear Series PY 21cc pumps and Parker TG0310 high torque wheel motors. Hydraulic oil cooler with fan and hot oil shuttle keep transmission cool in demanding conditions.	Dual hydrostatic. Hydro-Gear Series PK 12cc pumps and Parker TF0240 high torque wheel motors.
	Ground Speed	Forward 0-13 mph (0-20.9 kph) Reverse 0-7 mph (0-11.3 kph)	Forward 0-11 mph (0-17.7 kph) Reverse 0-6 mph (0-9.66 kph)
	MOWING DECKS	Cutting Widths	60", 66" & 72" Side-discharge / 60", 72" Rear-discharge
Discharge Chute		High density, rubberized	High density, rubberized
Deck System		Foot-operated deck height adjustment. 1/4in increments from 1 in to 5.5 in (2.55 cm to 13.97 cm)	Foot-operated deck height adjustment. 1/4in increments from 1 in to 5.5 in (2.55 cm to 13.97 cm)
Blades		Heavy-duty, heat-treated, high-lift steel Fusion™ blades. 60 in: 20.50 in x 3.00 in x .250 in blade, extra high sail 66 in: 22.50 in x 3.00 in x .250 in blade, extra high sail 72 in: 24.50 in x 3.00 in x .250 in blade, extra high sail	Heavy-duty, heat-treated, high-lift steel Fusion™ blades. 48 in: 16.5 in x 2.5 in x .20 in 54 in: 18.5 in x 2.5 in x .20 in 60 in: 20.5 in x 2.5 in x .20 in
Spindle Housing		Ductile iron casting with steel shafts and sealed ball bearings	Ductile iron casting with steel shafts and sealed ball bearings
Blade Tip Speed		Side-Discharge 60 in: 18,630 fpm 66 in: 18,230 fpm 72 in: 18,530 fpm Rear-Discharge 60 in: 18,630 fpm 72 in: 18,040 fpm	Side-Discharge 48 in: 18,580 fpm 54 in: 18,340 fpm 60 in: 18,410 fpm Rear-Discharge 54 in: 18,580 fpm 60 in: 18,410 fpm
Seat		Super deluxe seat with armrests. Fore and aft adjustment. OR Molded vinyl suspension seat with armrests. Fore and aft adjustment.	Deluxe vinyl seat with armrests. Fore and aft sliding adjustment.



TRACTION DRIVE SYSTEM	Warranty	OR 2 year, 1200 hour - limited 5 year, 500 hour - limited Lifetime, frame and leading edge of deck - limited	2 year, parts and labor - limited Lifetime, leading edge of deck - limited
	Engine Configurations	22hp Kawasaki FX691 23.5hp Kawasaki FX730	14.5hp Kawasaki FS481 18.5hp Kawasaki FS600 15hp Kawasaki FS541 23hp Kawasaki FS691 (Electric Start)
	Air Filter	Heavy-duty air cleaner to extend the service interval for excessive, dirty applications and improved performance	Dual element
	Park Brake	Patented, integrated into steering levers	Hand operated
	Drive Tires	52 in: 24 x 9.5 - 12, turf tread 60 in: 24 x 12 - 12, turf tread	36 in: 18 x 6.50 - 8, turf tread 48-54 in: 20 x 10 - 10, turf tread
	Caster Tires	13 x 6.5 - 6, rib tread	11 x 4 - 4, smooth, semi-pneumatic
	Fuel Capacity	6.8 US gal (25.74 L)	3.4 US gal (12.9 L)
	Drive System	Dual hydrostatic integrated transmissions. Parker HTE10 transmissions with variable displacement piston pumps driving a commercial wheel motor.	Dual hydrostatic. Hydro-Gear ZT 2800.
	Ground Speed	Forward 0-9 mph (0-14.5 kph) Reverse 0-5 mph (0-8 kph)	Forward 0-6.3 mph (0-10.1 kph) Reverse 0-2 mph (0-3.2 kph)
	MOWING DECKS	Cutting Widths	52" & 60" Side-discharge
Discharge Chute		High density, rubberized	High density, rubberized
Deck System		Foot-operated deck height adjustment. 1/4in increments from 1 in to 5.5 in (2.55 cm to 13.97 cm)	Hand-operated deck height adjustment. 1/4in increments from 1.5 in to 4.5 in (3.81 cm to 11.43 cm)
Blades		Heavy-duty, heat-treated, high-lift steel blades. 52 in: 17.9 in x 2.5 in x .20 in 60 in: 20.9 in x 2.5 in x .20 in	Heavy-duty, heat-treated, 10B38 steel blades 36 in Deck: 20.5 in x 2.50 in x .204 in RH blade 13.75 in x 2.50 in x .204 in LH blade 48 in Deck: 16.5 in x 2.50 in x .204 in 54 in Deck: 18.5 in x 2.50 in x .204 in
Spindle Housing		Ductile iron casting with steel shafts and sealed ball bearings	Aluminum casting with steel shafts and sealed ball bearings
Blade Tip Speed		Side-Discharge 52 in: 17,710 fpm 60 in: 18,410 fpm	36 in: 18,400 fpm 48 in: 18,600 fpm 54 in: 18,920 fpm
Seat		Deluxe vinyl seat with armrests. Fore and aft sliding adjustment.	None

FaTrak SUPER DUTY

FaTrak

TRACTION DRIVE SYSTEM	Warranty	OR 4 year, 800 hour - residential limited 2 year, 800 hour - commercial limited Lifetime, frame and leading edge of deck - limited	OR 4 year, 400 hour - residential limited 1 year, 400 hour - commercial limited Lifetime, frame and leading edge of deck - limited
	Engine Configurations	19hp Kawasaki FX600 23.5hp Kawasaki FX730 22hp Kawasaki FX691	22hp Kawasaki FS651V 23hp Kawasaki FS691V 24hp Kawasaki FS730V
	Air Filter	Heavy-duty air cleaner to extend the service interval for excessive, dirty applications and improved performance	Dual element
	Park Brake	Patented, integrated into steering levers	Patented, integrated into steering levers
	Drive Tires	36 in: 20 x 8 – 10, turf tread 42 in: 20 x 10 – 10, turf tread 48 in: 20 x 10 – 10, turf tread	54 in: 20 x 12 – 10, turf tread 60 in: 20 x 12 – 10, turf tread
	Caster Tires	13 x 5 – 6, rib tread	13 x 5 – 6, rib tread
	Fuel Capacity	36" & 42" 4.2 US gal (15.89 L) 48", 54" & 60" 6.8 US gal (25.7 L)	6.8 US gal (25.7 L)
	Drive System	Dual hydrostatic. Commercial-duty Hydro-Gear ZT 3100	Dual hydrostatic. Commercial-duty Hydro-Gear ZT 3100.
	Ground Speed	36" & 42" Forward 0-7.5 mph (0-12.1 kph) Reverse 0-4.5 mph (0-7.2 kph)	48", 54" & 60" Forward 0-8 mph (0-12.9 kph) Reverse 0-5 mph (0-8 kph)
	MOWING DECKS	Cutting Widths	36", 42", 48", 54" & 60" Side-discharge
Discharge Chute		High density, rubberized	High density, rubberized
Deck System		Foot-operated deck height adjustment. 1/4in increments from 1.5 in to 4.5 in (3.81 cm to 11.43 cm)	Foot-operated deck height adjustment. 1/4in increments from 1.5 in to 4.5 in (3.81 cm to 11.43 cm)
Blades		Heavy-duty, heat-treated, high-lift steel Fusion™ blades. 48 in: 16.5 in x 2.5 in x .20 in 54 in: 18.5 in x 2.5 in x .20 in 60 in: 20.5 in x 2.5 in x .20 in	Heavy-duty, heat-treated, low-lift steel blades 48 in: 16.5 in x 2.5 in x .20 in 54 in: 18.5 in x 2.5 in x .20 in 60 in: 20.5 in x 2.5 in x .20 in
Spindle Housing		Aluminum casting with steel shafts and sealed ball bearings	Aluminum casting with steel shafts and sealed ball bearings
Blade Tip Speed		36 in: 18,400 fpm 42 in: 18,400 fpm 48 in: 18,600 fpm	54 in: 18,910 fpm 60 in: 18,410 fpm
Seat		Molded-vinyl seat with adjustable armrests. Fore and aft sliding adjustment. Seat-pan suspension springs standard.	Molded-vinyl seat with adjustable armrests. Fore and aft sliding adjustment. Seat-pan suspension springs standard.

Sport

Raptor

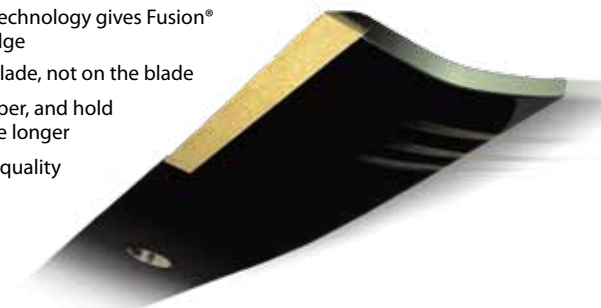
TRACTION DRIVE SYSTEM	Warranty	3 year, no hour limit - residential limited	3 year, no hour limit - residential limited
	Engine Configurations	15hp Kawasaki FR541V 21.5hp Kawasaki FR651V	18hp Kawasaki FR600V 21.5hp Kawasaki FR691V
	Air Filter	Air cleaner for excessive, dirty applications and improved performance	Air cleaner for excessive, dirty applications and improved performance
	Park Brake	Patented, integrated into steering levers	Patented, integrated into steering levers
	Drive Tires	18 x 8.50 – 8, turf tread (42", 48") 18 x 9.50 – 8, turf tread (54")	18 x 8.50 – 8, turf tread
	Caster Tires	11 x 4 – 5, rib tread	11 x 4 – 5, rib tread
	Fuel Capacity	2.1 US gal (7.95L)	3 US gal (11.36L)
	Drive System	Dual hydrostatic. Hydro-Gear EZT Transmissions.	Dual hydrostatic. Hydro-Gear EZT Transmissions.
	Ground Speed	Forward 0-7 mph (0-11.3 kph) Reverse 0-4 mph (0-6.4 kph)	Forward 0-6 mph (0-9.7 kph) Reverse 0-4 mph (0-6.4 kph)
	MOWING DECKS	Cutting Widths	42", 48" & 54" Side-discharge
Discharge Chute		High density, rubberized	High density, rubberized
Deck System		Hand-operated deck height adjustment. 1/4in increments from 1.0 in to 4.5 in (2.54 cm to 11.43 cm)	Hand-operated deck height adjustment. 1/2in increments from 1.5 in to 4.5 in (3.8 cm to 11.43 cm)
Blades		Heavy-duty, heat-treated, low-lift steel blades 42 in: 2 - 20.50 in x 2.50 in x .20 48 in: 3 - 16.50 in x 2.50 in x .20 54 in: 3 - 18.50 in x 2.50 in x .20	Heavy-duty, heat-treated, low-lift steel blades 42 in: 2 - 20.50 in x 2.25 in x .188 52 in: 3 - 17.86 in x 2.25 in x .188
Spindle Housing		Die cast aluminum housing, 1 in (2.5 cm) diameter	Die cast aluminum housing, .76in (1.93 cm) diameter
Blade Tip Speed		42 in: 18,100 fpm 48 in: 18,600 fpm 54 in: 18,400 fpm	42 in: 16,700 fpm 52 in: 16,600 fpm
Seat		Molded-vinyl seat. Fore and aft adjustment. Seat-pan suspension springs standard.	Molded-vinyl seat. Fore and aft adjustment. Seat-pan suspension springs standard.

AFTERMARKET MAKE THE MOST OF YOUR HUSTLER.



POWER & DURABILITY

- Stays Sharp Twice as Long
- Exclusive electrofusion technology gives Fusion® blades their superior edge
- The difference is in the blade, not on the blade
- Fusion® blades stay sharper, and hold their clean-cutting edge longer
- You'll get the same high quality of cut all day long
- Heat-treated hardness throughout the body of the blade



Ask your Hustler dealer for replacement blades (which come standard from the factory).

Metro Lawn Propane Conversions

- The official propane conversion for Kawasaki Engine
- EPA / CARB Certified
- Full Warranty
- Nationwide Coverage
- Safety & Technical Support
- Safety & Technical Training



ACCELERATOR INDUSTRIES



PREMIUM ALUMINUM GRASSCATCHERS

- Heavy duty aluminum construction
- No rust or clogging
- Large capacity up to 11 cubic ft.
- Lightweight



Standard size 4.15 cubic ft. catcher shown here

www.acceleratorindustries.com

Jrco Heavy-duty Attachments For Commercial Mowers

Electric Broadcast Spreader



Tine Rake Dethatcher



www.jrcoinc.com

71

PERFORMANCE. RELIABILITY. VALUE.
THE HUSTLER EXPERIENCE.

